



Light Performance Grade: Exceptional



December 24, 2025 IGI Report Number LG760556879 Description LABORATORY GROWN DIAMOND Shape and Cutting Style OVAL BRILLIANT Measurements 12.19 X 8.12 X 5.10 MM GRADING RESULTS Carat Weight 3.08 CARATS Color Grade F Clarity Grade VVS 1



Structured Light Environment Representation



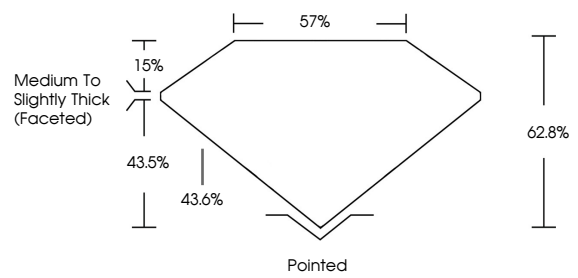
COLOR



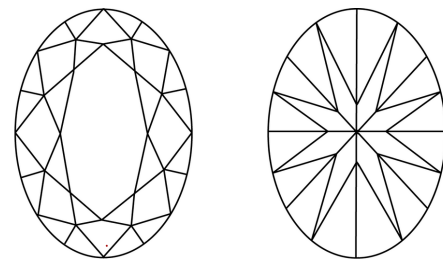
CLARITY

Table with columns for clarity grades: FL, IF, VS 1-2, VS 1-2, SI 1-2, I 1-3 and their descriptions: Flawless, Internally Flawless, Very Very Slightly Included, Very Slightly Included, Slightly Included, Included.

PROPORTIONS

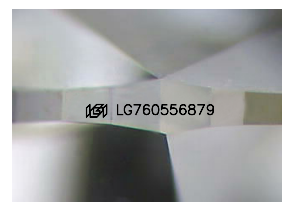


CLARITY CHARACTERISTICS

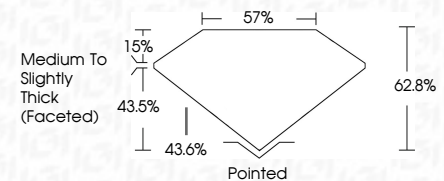


KEY TO SYMBOLS

Red symbols indicate internal characteristics. Green symbols indicate external characteristics.



Sample Image Used



ADDITIONAL GRADING INFORMATION

Polish EXCELLENT Symmetry EXCELLENT Fluorescence NONE Inscription(s) IGI LG760556879 Comments: This Laboratory Grown Diamond was created by Chemical Vapor Deposition (CVD) growth process. Type IIa



IGI

December 24, 2025 IGI Report No LG760556879 OVAL BRILLIANT 3.08 CARATS F 12.19 X 8.12 X 5.10 MM Carat Weight 3.08 CARATS Color Grade F Clarity Grade VVS 1 Depth 62.8% Table 57% Girdle Medium To Slightly Thick (Faceted) Culet Pointed Polish EXCELLENT Symmetry EXCELLENT Fluorescence NONE Inscription(s) IGI LG760556879 Comments: This Laboratory Grown Diamond was created by Chemical Vapor Deposition (CVD) growth process. Type IIa