



LABORATORY GROWN DIAMOND REPORT

December 29, 2025
 IGI Report Number **LG760554973**
 Description **LABORATORY GROWN DIAMOND**
 Shape and Cutting Style **ROUND BRILLIANT**
 Measurements **5.17 - 5.19 X 3.19 MM**

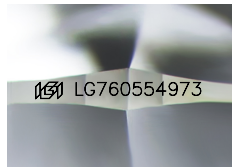
GRADING RESULTS

Carat Weight **0.53 CARAT**
 Color Grade **E**
 Clarity Grade **VVS 2**
 Cut Grade **IDEAL**

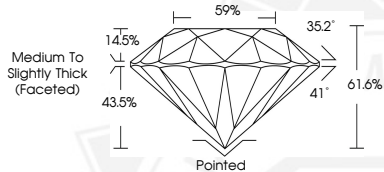
ADDITIONAL GRADING INFORMATION

Polish **VERY GOOD**
 Symmetry **EXCELLENT**
 Fluorescence **NONE**
 Inscription(s) **IGI LG760554973**

Comments: This Laboratory Grown Diamond was created by
 Chemical Vapor Deposition (CVD) growth process.
 Type IIa



Sample Image Used



December 29, 2025
 IGI Report Number **LG760554973**
ROUND BRILLIANT
LABORATORY GROWN DIAMOND
5.17 - 5.19 X 3.19 MM
 Carat Weight **0.53 CARAT**
 Color Grade **E**
 Clarity Grade **VVS 2**
 Cut Grade **IDEAL**
 Polish **VERY GOOD**
 Symmetry **EXCELLENT**
 Fluorescence **NONE**
 Inscription(s) **IGI LG760554973**

Comments: This Laboratory Grown Diamond was created by
 Chemical Vapor Deposition (CVD) growth process. Type IIa



December 29, 2025
 IGI Report Number **LG760554973**
ROUND BRILLIANT
LABORATORY GROWN DIAMOND
5.17 - 5.19 X 3.19 MM
 Carat Weight **0.53 CARAT**
 Color Grade **E**
 Clarity Grade **VVS 2**
 Cut Grade **IDEAL**
 Polish **VERY GOOD**
 Symmetry **EXCELLENT**
 Fluorescence **NONE**
 Inscription(s) **IGI LG760554973**

Comments: This Laboratory Grown Diamond was created by
 Chemical Vapor Deposition (CVD) growth process. Type IIa



THIS DOCUMENT WAS PRODUCED WITH THE FOLLOWING SECURITY MEASURES: SPECIAL DOCUMENT PAPER, INK SCREENS, WATERMARK, BACKGROUND DESIGNS, HOLOGRAM AND OTHER SECURITY FEATURES NOT LISTED AND DO EXCEED DOCUMENT SECURITY INDUSTRY GUIDELINES.