



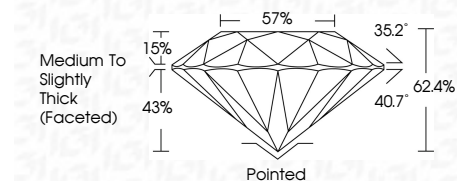
ELECTRONIC COPY

LG760554491
Report verification at igi.org



December 26, 2025
IGI Report Number LG760554491
Description LABORATORY GROWN DIAMOND
Shape and Cutting Style ROUND BRILLIANT
Measurements 7.54 - 7.57 X 4.72 MM

GRADING RESULTS
Carat Weight 1.69 CARAT
Color Grade F
Clarity Grade VS 1
Cut Grade IDEAL



ADDITIONAL GRADING INFORMATION
Polish EXCELLENT
Symmetry EXCELLENT
Fluorescence NONE
Inscription(s) IGI LG760554491
Comments: As Grown - No indication of post-growth treatment.
This Laboratory Grown Diamond was created by High Pressure High Temperature (HPHT) growth process.
Type II



December 26, 2025
IGI Report No LG760554491
ROUND BRILLIANT
1.69 CARAT F
7.54 - 7.57 X 4.72 MM
Color Grade VS 1 IDEAL
Clarity Grade 62.4% 57%
Cut Grade Medium To Slightly Thick (Faceted)
Pointed EXCELLENT
Polish EXCELLENT
Symmetry EXCELLENT
Fluorescence NONE
Inscriptions(s) IGI LG760554491
Comments: As Grown - No indication of post-growth treatment.
This Laboratory Grown Diamond was created by High Pressure High Temperature (HPHT) growth process.
Type II

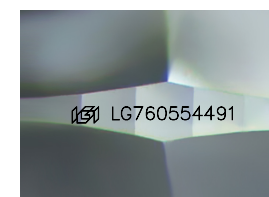
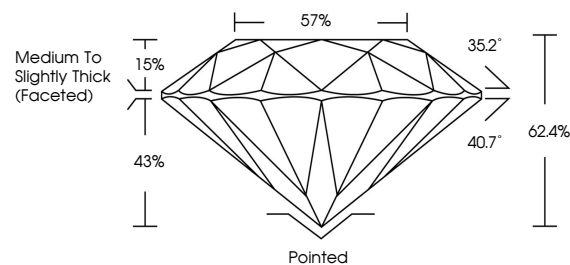
December 26, 2025
IGI Report Number LG760554491
Description LABORATORY GROWN DIAMOND
Shape and Cutting Style ROUND BRILLIANT
Measurements 7.54 - 7.57 X 4.72 MM

GRADING RESULTS
Carat Weight 1.69 CARAT
Color Grade F
Clarity Grade VS 1
Cut Grade IDEAL

ADDITIONAL GRADING INFORMATION
Polish EXCELLENT
Symmetry EXCELLENT
Fluorescence NONE
Inscription(s) IGI LG760554491

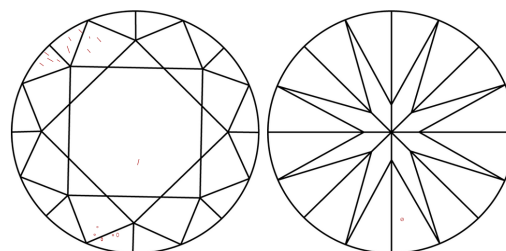
Comments: As Grown - No indication of post-growth treatment.
This Laboratory Grown Diamond was created by High Pressure High Temperature (HPHT) growth process.
Type II

PROPORTIONS



Sample Image Used

CLARITY CHARACTERISTICS



KEY TO SYMBOLS

Red symbols indicate internal characteristics.
Green symbols indicate external characteristics.

COLOR

D E F G H I J Faint Very Light Light

CLARITY

FL IF VS 1-2 VS 2-3 SI 1-2 I 1-3
Flawless Internally Flawless Very Very Slightly Very Slightly Slightly Included Included

