



ELECTRONIC COPY

LG760554301
Report verification at igi.org



December 29, 2025
IGI Report Number **LG760554301**
Description **LABORATORY GROWN DIAMOND**
Shape and Cutting Style **ROUND BRILLIANT**
Measurements **7.38 - 7.43 X 4.53 MM**
GRADING RESULTS
Carat Weight **1.53 CARAT**
Color Grade **D**
Clarity Grade **INTERNALLY FLAWLESS**
Cut Grade **IDEAL**

December 29, 2025
IGI Report Number **LG760554301**
Description **LABORATORY GROWN DIAMOND**
Shape and Cutting Style **ROUND BRILLIANT**
Measurements **7.38 - 7.43 X 4.53 MM**

GRADING RESULTS

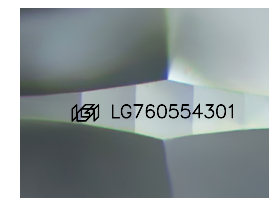
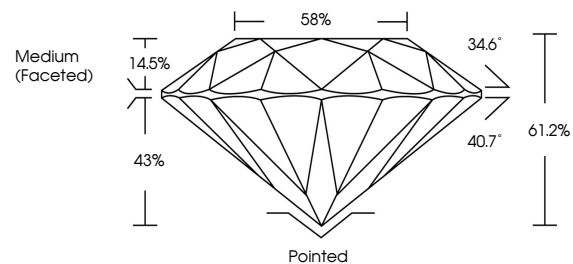
Carat Weight **1.53 CARAT**
Color Grade **D**
Clarity Grade **INTERNALLY FLAWLESS**
Cut Grade **IDEAL**

ADDITIONAL GRADING INFORMATION

Polish **EXCELLENT**
Symmetry **EXCELLENT**
Fluorescence **NONE**
Inscription(s) **IGI LG760554301**

Comments: As Grown - No indication of post-growth treatment.
This Laboratory Grown Diamond was created by High Pressure High Temperature (HPHT) growth process.
Type II

PROPORTIONS



Sample Image Used

CLARITY CHARACTERISTICS



KEY TO SYMBOLS

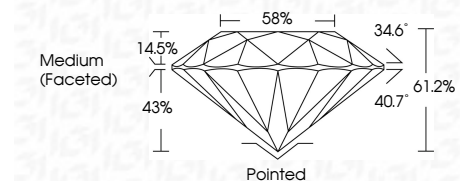
Red symbols indicate internal characteristics.
Green symbols indicate external characteristics.

COLOR

D E F G H I J Faint Very Light Light

CLARITY

| FL | IF | VS ¹⁻² | VS ¹⁻² | SI ¹⁻² | I ¹⁻³ |
|----------|---------------------|-----------------------------|------------------------|-------------------|------------------|
| Flawless | Internally Flawless | Very Very Slightly Included | Very Slightly Included | Slightly Included | Included |



ADDITIONAL GRADING INFORMATION

Polish **EXCELLENT**
Symmetry **EXCELLENT**
Fluorescence **NONE**
Inscription(s) **IGI LG760554301**
Comments: As Grown - No indication of post-growth treatment.
This Laboratory Grown Diamond was created by High Pressure High Temperature (HPHT) growth process.
Type II



IGI



| | | | | | | | | | | | | | | | |
|-------------------|---------------------------|-----------------|-----------------------|----------------|---|----|-------|-------|-----|------------------|---------|-----------|-----------|------|-----------------|
| December 29, 2025 | IGI Report No LG760554301 | ROUND BRILLIANT | 7.38 - 7.43 X 4.53 MM | 1.53 CARAT | D | IF | IDEAL | 61.2% | 58% | Medium (Faceted) | Pointed | EXCELLENT | EXCELLENT | NONE | IGI LG760554301 |
| Cut | Polish | Symmetry | Fluorescence | Inscription(s) | Comments: As Grown - No indication of post-growth treatment. This Laboratory Grown Diamond was created by High Pressure High Temperature (HPHT) growth process. Type II | | | | | | | | | | |