



**LABORATORY GROWN DIAMOND REPORT**

January 17, 2026  
 IGI Report Number **LG760552206**  
 Description **LABORATORY GROWN DIAMOND**  
 Shape and Cutting Style **OVAL BRILLIANT**  
 Measurements **7.55 X 4.94 X 3.23 MM**

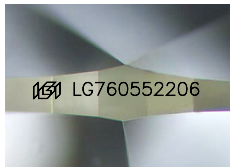
**GRADING RESULTS**

Carat Weight **0.81 CARAT**  
 Color Grade **E**  
 Clarity Grade **VS 2**

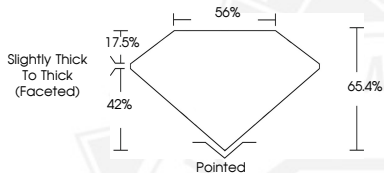
**ADDITIONAL GRADING INFORMATION**

Polish **VERY GOOD**  
 Symmetry **VERY GOOD**  
 Fluorescence **NONE**  
 Inscription(s) **IGI LG760552206**

Comments: This Laboratory Grown Diamond was created by  
 Chemical Vapor Deposition (CVD) growth process.  
 Type IIa



Sample Image Used



January 17, 2026  
 IGI Report Number **LG760552206**  
**OVAL BRILLIANT**  
**LABORATORY GROWN DIAMOND**  
**7.55 X 4.94 X 3.23 MM**  
 Carat Weight **0.81 CARAT**  
 Color Grade **E**  
 Clarity Grade **VS 2**  
 Polish **VERY GOOD**  
 Symmetry **VERY GOOD**  
 Fluorescence **NONE**  
 Inscription(s) **IGI LG760552206**

Comments: This Laboratory Grown  
 Diamond was created by  
 Chemical Vapor Deposition (CVD)  
 growth process. Type IIa



January 17, 2026  
 IGI Report Number **LG760552206**  
**OVAL BRILLIANT**  
**LABORATORY GROWN DIAMOND**  
**7.55 X 4.94 X 3.23 MM**  
 Carat Weight **0.81 CARAT**  
 Color Grade **E**  
 Clarity Grade **VS 2**  
 Polish **VERY GOOD**  
 Symmetry **VERY GOOD**  
 Fluorescence **NONE**  
 Inscription(s) **IGI LG760552206**

Comments: This Laboratory Grown  
 Diamond was created by  
 Chemical Vapor Deposition (CVD)  
 growth process. Type IIa



THIS DOCUMENT WAS PRODUCED WITH THE FOLLOWING SECURITY MEASURES: SPECIAL DOCUMENT PAPER, INK SCREENS, WATERMARK, BACKGROUND DESIGNS, HOLOGRAM AND OTHER SECURITY FEATURES NOT LISTED AND DO EXCEED DOCUMENT SECURITY INDUSTRY GUIDELINES.