



**ELECTRONIC COPY**

## LABORATORY GROWN DIAMOND REPORT

January 13, 2026	
IGI Report Number	LG760548910
Description	LABORATORY GROWN DIAMOND
Shape and Cutting Style	ROUND BRILLIANT
Measurements	8.13 - 8.18 X 5.04 MM

## GRADING RESULTS

Carat Weight	2.03 CARATS
Color Grade	D
Clarity Grade	VS 1
Cut Grade	EXCELLENT

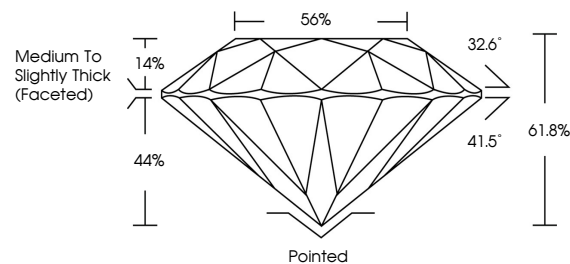
### ADDITIONAL GRADING INFORMATION

Polish	EXCELLENT
Symmetry	EXCELLENT
Fluorescence	NONE
Inscription(s)	 LG760548910

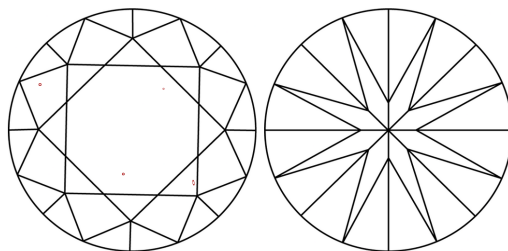
Comments: This Laboratory Grown Diamond was created by Chemical Vapor Deposition (CVD) growth process.  
Type IIa

LG760548910  
Report verification at [igi.org](https://igi.org)

## PROPORTIONS

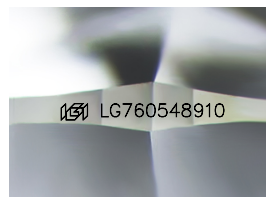


## CLARITY CHARACTERISTICS



## KEY TO SYMBOLS

Red symbols indicate internal characteristics.  
Green symbols indicate external characteristics.



Sample Image Used

## COLOR

D E F G H I J Faint Very Light Light

## CLARITY

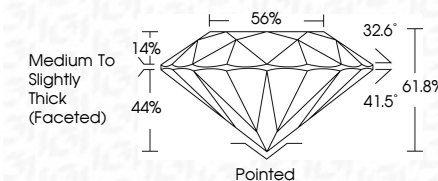
FL	IF	VVS <sup>1-2</sup>	VS <sup>1-2</sup>	SI <sup>1-2</sup>	I <sup>1-3</sup>
Flawless	Internally Flawless	Very Very Slightly Included	Very Slightly Included	Slightly Included	Included



January 13, 2026	
IGI Report Number	LG760548910
Description	LABORATORY GROWN DIAMOND
Shape and Cutting Style	ROUND BRILLIANT
Measurements	8.13 - 8.18 X 5.04 MM

## GRADING RESULTS

Carat Weight	2.03 CARATS
Color Grade	D
Clarity Grade	VS 1
Cut Grade	EXCELLENT



### ADDITIONAL GRADING INFORMATION

Polish	EXCELLENT
Symmetry	EXCELLENT
Fluorescence	NONE
Inscription(s)	 LG760548910
Comments: This Laboratory Grown Diamond was created by Chemical Vapor Deposition (CVD) growth process.	
Type IIa	



© IGI 2020, International Gemological Institute

FD - 10 20



THIS DOCUMENT WAS PRODUCED WITH THE FOLLOWING SECURITY MEASURES: SPECIAL DOCUMENT PAPER, INK SCREENS, WATERMARK, BACKGROUND DESIGNS, HOLOGRAM AND OTHER SECURITY FEATURES NOT LISTED AND DO EXCEED DOCUMENT SECURITY INDUSTRY GUIDELINES

**www.igi.org**

January 13, 2026	218 CARATS	D	VS 1	Excellent	Polished	Comments: This is a Fancy Crown Diamond was treated by Group Vapor Deposition (CVD) growth process. Type IIa
GI Report No. LG703649710			EXCELLENT	615%	EXCELLENT	
ROUND BRILLIANT				55%	NONE	
				Medium to Slightly Thick (Faceted)		
					1691 LG703649710	
	Carat Weight	Color Grade	Clarity Grade	Cut Grade	Depth	
					Table	
					Girdle	
					Culet	
					Polish	
					Symmetry	
					Fluorescence	
					Inscriptions(s)	