



ELECTRONIC COPY

LABORATORY GROWN DIAMOND REPORT

LG760546908
Report verification at igi.org

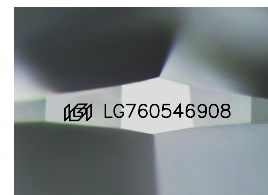
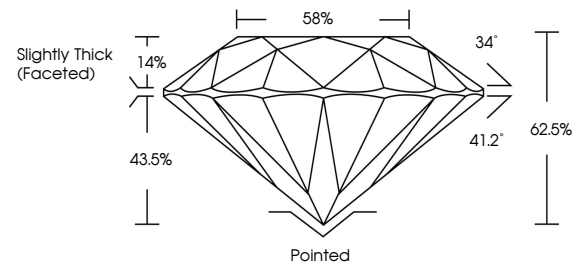
January 12, 2026	
IGI Report Number	LG760546908
Description	LABORATORY GROWN DIAMOND
Shape and Cutting Style	ROUND BRILLIANT
Measurements	7.99 - 8.03 X 5.01 MM
GRADING RESULTS	
Carat Weight	2.00 CARATS
Color Grade	E
Clarity Grade	VS 1
Cut Grade	EXCELLENT

ADDITIONAL GRADING INFORMATION

Polish	EXCELLENT
Symmetry	EXCELLENT
Fluorescence	NONE
Inscription(s)	15 LG760546908

Comments: This Laboratory Grown Diamond was created by Chemical Vapor Deposition (CVD) growth process.
Type IIa

PROPORTIONS



Sample Image Used

COLOR

D E F G H I J Faint Very Light Light

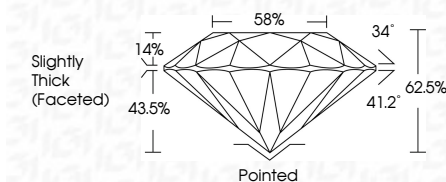
CLARITY

FL	IF	VVS ¹⁻²	VS ¹⁻²	SI ¹⁻²	I ¹⁻³
Flawless	Internally Flawless	Very Very Slightly Included	Very Slightly Included	Slightly Included	Included

LABORATORY GROWN DIAMOND REPORT



January 12, 2026	
IGI Report Number	LG760546908
Description	LABORATORY GROWN DIAMOND
Shape and Cutting Style	ROUND BRILLIANT
Measurements	7.99 - 8.03 X 5.01 MM
GRADING RESULTS	
Carat Weight	2.00 CARATS
Color Grade	E
Clarity Grade	VS 1
Cut Grade	EXCELLENT



ADDITIONAL GRADING INFORMATION

Polish	EXCELLENT
Symmetry	EXCELLENT
Fluorescence	NONE
Inscription(s)	 LG760546908
<p>Comments: This Laboratory Grown Diamond was created by Chemical Vapor Deposition (CVD) growth process.</p> <p>Type IIa</p>	



© IGI 2020, International Gemological Institute

FD - 10 20



THIS DOCUMENT WAS PRODUCED WITH THE FOLLOWING SECURITY MEASURES: SPECIAL DOCUMENT PAPER, INK SCREENS, WATERMARK, BACKGROUND DESIGNS, HOLOGRAM, AND OTHER SECURITY FEATURES NOT LISTED AND DO EXCEED DOCUMENT SECURITY INDUSTRY GUIDELINES.

www.igi.org

January 12, 2026
GI Report No LG760546908
ROUND BRILLIANT

7.99 - 8.03 X 5.01 MM

7.99 - 8.03 X 6.01 MM
Carat Weight
2.00 CARATS

Color Grade E

Clarity Grade	VS 1	EXCELLENT
Clarity Grade		
Clarity Grade		

Cut Grade	EXCELLENT
Depth	62.5%

Table	58%
Table	62.5%

Girdle

	Culet	Pointed
1	0.00	0.00
2	0.00	0.00
3	0.00	0.00
4	0.00	0.00
5	0.00	0.00
6	0.00	0.00
7	0.00	0.00
8	0.00	0.00
9	0.00	0.00
10	0.00	0.00
11	0.00	0.00
12	0.00	0.00
13	0.00	0.00
14	0.00	0.00
15	0.00	0.00
16	0.00	0.00
17	0.00	0.00
18	0.00	0.00
19	0.00	0.00
20	0.00	0.00
21	0.00	0.00
22	0.00	0.00
23	0.00	0.00
24	0.00	0.00
25	0.00	0.00
26	0.00	0.00
27	0.00	0.00
28	0.00	0.00
29	0.00	0.00
30	0.00	0.00
31	0.00	0.00
32	0.00	0.00
33	0.00	0.00
34	0.00	0.00
35	0.00	0.00
36	0.00	0.00
37	0.00	0.00
38	0.00	0.00
39	0.00	0.00
40	0.00	0.00
41	0.00	0.00
42	0.00	0.00
43	0.00	0.00
44	0.00	0.00
45	0.00	0.00
46	0.00	0.00
47	0.00	0.00
48	0.00	0.00
49	0.00	0.00
50	0.00	0.00
51	0.00	0.00
52	0.00	0.00
53	0.00	0.00
54	0.00	0.00
55	0.00	0.00
56	0.00	0.00
57	0.00	0.00
58	0.00	0.00
59	0.00	0.00
60	0.00	0.00
61	0.00	0.00
62	0.00	0.00
63	0.00	0.00
64	0.00	0.00
65	0.00	0.00
66	0.00	0.00
67	0.00	0.00
68	0.00	0.00
69	0.00	0.00
70	0.00	0.00
71	0.00	0.00
72	0.00	0.00
73	0.00	0.00
74	0.00	0.00
75	0.00	0.00
76	0.00	0.00
77	0.00	0.00
78	0.00	0.00
79	0.00	0.00
80	0.00	0.00
81	0.00	0.00
82	0.00	0.00
83	0.00	0.00
84	0.00	0.00
85	0.00	0.00
86	0.00	0.00
87	0.00	0.00
88	0.00	0.00
89	0.00	0.00
90	0.00	0.00
91	0.00	0.00
92	0.00	0.00
93	0.00	0.00
94	0.00	0.00
95	0.00	0.00
96	0.00	0.00
97	0.00	0.00
98	0.00	0.00
99	0.00	0.00
100	0.00	0.00

Material	Polished	Painted
Aluminum	Excellent	Excellent
Steel	Excellent	Excellent
Brass	Excellent	Excellent
Copper	Excellent	Excellent
Galvanized Steel	Excellent	Excellent
Stainless Steel	Excellent	Excellent
Cast Iron	Excellent	Excellent
Lead	Excellent	Excellent
Concrete	Excellent	Excellent
Refractory	Excellent	Excellent
Plastic	Excellent	Excellent
Wood	Excellent	Excellent
Glass	Excellent	Excellent
Enamel	Excellent	Excellent
Paint	Excellent	Excellent
Sealant	Excellent	Excellent
Adhesive	Excellent	Excellent
Coating	Excellent	Excellent
Finish	Excellent	Excellent
Surface	Excellent	Excellent
Material	Excellent	Excellent
Polish	Excellent	Excellent

Symmetry	EXCELLENT
Fluorescence	NONE

Fluorescence	NONE
Inscription(s)	(51) LG760546908

Comments:

Comments:
This Laboratory Grown Diamond was created by Chemical Vapor Deposition

created by Chemical Vapor Deposition (CVD) growth process.

Type IIa