

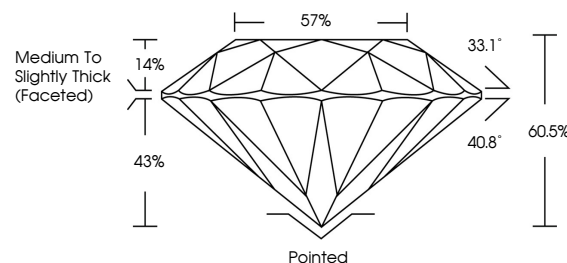


ELECTRONIC COPY

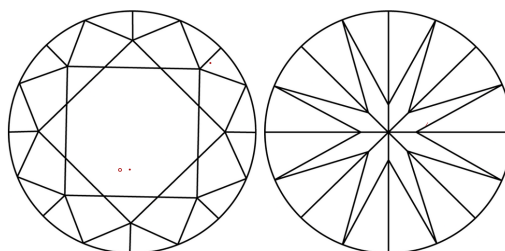
LABORATORY GROWN DIAMOND REPORT

LG760545439
Report verification at lgi.org

PROPORTIONS



CLARITY CHARACTERISTICS



KEY TO SYMBOLS

Red symbols indicate internal characteristics.
Green symbols indicate external characteristics.

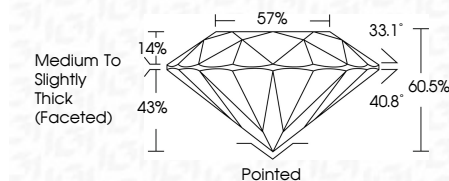
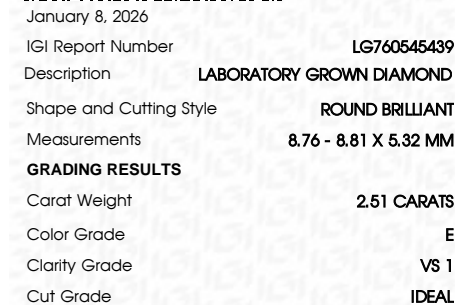
COLOR

D E F G H I J Faint Very Light Light

CLARITY

FL	IF	VVS ¹⁻²	VS ¹⁻²	SI ¹⁻²	I ¹⁻³
Flawless	Internally Flawless	Very Very Slightly Included	Very Slightly Included	Slightly Included	Included

LABORATORY GROWN DIAMOND REPORT



ADDITIONAL GRADING INFORMATION

Polish	EXCELLENT
Symmetry	EXCELLENT
Fluorescence	NONE
Inscription(s)	(G) LG760545439
Comments: This Laboratory Grown Diamond was created by Chemical Vapor Deposition (CVD) growth process.	
Type IIa	



© IGI 2020, International Gemological Institute

FD - 10 20

www.igi.org



January 8, 2026
GI Report No LG760545439
ROUND BRILLIANT

ROUND BRILLIANT		4.76 - 4.81 X 5.52 MM		2.51 CARATS	
		Carat Weight		VS1	
		Color Grade		IDEAL	
		Clarity Grade		6.0%	
		Cut Grade		57%	
		Depth		Medium to Slightly Thick (Faceted)	
		Table		Pointed	
		Girdle		EXCELLENT	
		Culet		EXCELLENT	
		Polish		NONE	
Symmetry		NONE			
Fluorescence		NONE			
Fire		NONE			

Comments:
This Laboratory Grown Diamond was created by Chemical Vapor Deposition (CVD) growth process.