



ELECTRONIC COPY

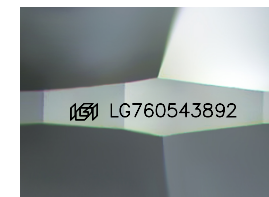
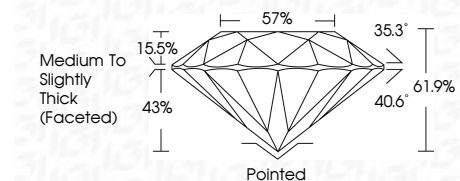
LG760543892
Report verification at igi.org



December 29, 2025
IGI Report Number LG760543892
Description LABORATORY GROWN DIAMOND
Shape and Cutting Style ROUND BRILLIANT
Measurements 7.43 - 7.46 X 4.60 MM

GRADING RESULTS

Carat Weight 1.58 CARAT
Color Grade E
Clarity Grade VVS 1
Cut Grade IDEAL



Sample Image Used

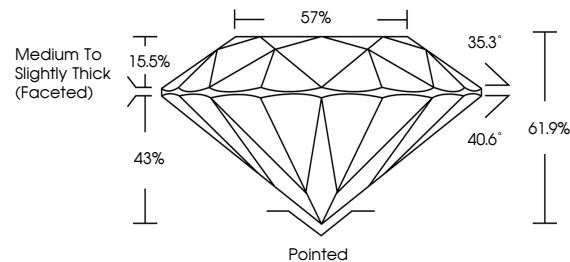
ADDITIONAL GRADING INFORMATION

Polish EXCELLENT
Symmetry EXCELLENT
Fluorescence NONE
Inscription(s) IGI LG760543892
Comments: As Grown - No indication of post-growth treatment.
This Laboratory Grown Diamond was created by High Pressure High Temperature (HPHT) growth process.
Type II

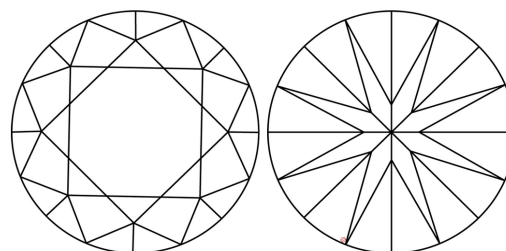


December 29, 2025
IGI Report No LG760543892
ROUND BRILLIANT
1.58 CARAT E
7.43 - 7.46 X 4.60 MM
Carat Weight
Color Grade VVS 1 IDEAL
Clarity Grade
Cut Grade 61.9% 57%
Depth
Table
Girdle
Medium To Slightly Thick (Faceted)
Culet Pointed
Polish EXCELLENT
Symmetry EXCELLENT
Fluorescence NONE
Inscription(s) IGI LG760543892
Comments: As Grown - No indication of post-growth treatment.
This Laboratory Grown Diamond was created by High Pressure High Temperature (HPHT) growth process.
Type II

PROPORTIONS



CLARITY CHARACTERISTICS



KEY TO SYMBOLS

Red symbols indicate internal characteristics.
Green symbols indicate external characteristics.

COLOR

D E F G H I J Faint Very Light Light

CLARITY

FL IF VVS 1-2 VS 1-2 SI 1-2 I 1-3
Flawless Internally Flawless Very Very Slightly Included Very Slightly Included Slightly Included Included

