



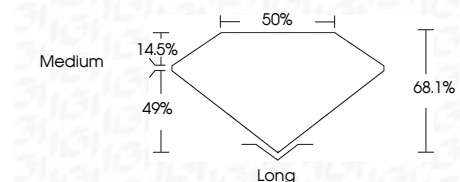
ELECTRONIC COPY

LG760542940
Report verification at igi.org



January 16, 2026
IGI Report Number **LG760542940**
Description **LABORATORY GROWN DIAMOND**
Shape and Cutting Style **BAGUETTE**
Measurements **12.89 X 4.07 X 2.77 MM**

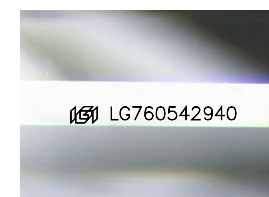
GRADING RESULTS
Carat Weight **1.57 CARAT**
Color Grade **E**
Clarity Grade **VS 1**



ADDITIONAL GRADING INFORMATION
Polish **EXCELLENT**
Symmetry **EXCELLENT**
Fluorescence **NONE**
Inscription(s) **IGI LG760542940**
Comments: This Laboratory Grown Diamond was created by Chemical Vapor Deposition (CVD) growth process. Type IIa

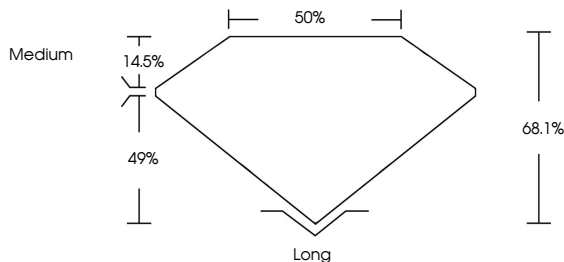


January 16, 2026
IGI Report No LG760542940
BAGUETTE
1.57 CARAT
E
12.89 X 4.07 X 2.77 MM
Color Grade
VS 1
Depth 68.1%
Table 49%
Girdle
Medium
Long
Culet
EXCELLENT
Polish
EXCELLENT
Symmetry
EXCELLENT
Fluorescence
NONE
Inscription(s)
IGI LG760542940
Comments: This Laboratory Grown Diamond was created by Chemical Vapor Deposition (CVD) growth process. Type IIa

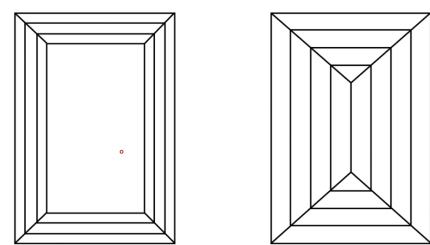


Sample Image Used

PROPORTIONS



CLARITY CHARACTERISTICS



KEY TO SYMBOLS
Red symbols indicate internal characteristics.
Green symbols indicate external characteristics.

COLOR

D	E	F	G	H	I	J	Faint	Very Light	Light
---	---	---	---	---	---	---	-------	------------	-------

CLARITY

FL	IF	VS ¹⁻²	VS ¹⁻²	SI ¹⁻²	I ¹⁻³
Flawless	Internally Flawless	Very Very Slightly Included	Very Slightly Included	Slightly Included	Included

