



ELECTRONIC COPY

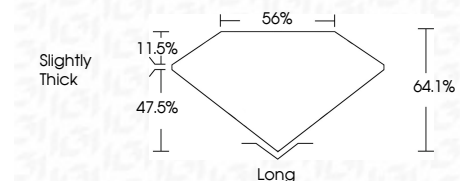
LG760542939
Report verification at igi.org



January 12, 2026
IGI Report Number **LG760542939**
Description **LABORATORY GROWN DIAMOND**
Shape and Cutting Style **BAGUETTE**
Measurements **12.99 X 4.21 X 2.70 MM**

GRADING RESULTS

Carat Weight **1.57 CARAT**
Color Grade **F**
Clarity Grade **VS 1**



ADDITIONAL GRADING INFORMATION

Polish **EXCELLENT**
Symmetry **EXCELLENT**
Fluorescence **NONE**
Inscription(s) **IGI LG760542939**
Comments: This Laboratory Grown Diamond was created by Chemical Vapor Deposition (CVD) growth process. Type IIa



January 12, 2026
IGI Report No LG760542939
BAGUETTE
1.57 CARAT
F
12.99 X 4.21 X 2.70 MM
Color Grade
VS 1
Depth 47.5%
Table 85%
Girdle
Slightly Thick
Culet
Long
Polish EXCELLENT
Symmetry EXCELLENT
Fluorescence NONE
Inscription(s) IGI LG760542939
Comments: This Laboratory Grown Diamond was created by Chemical Vapor Deposition (CVD) growth process. Type IIa

LABORATORY GROWN DIAMOND REPORT

January 12, 2026
IGI Report Number **LG760542939**
Description **LABORATORY GROWN DIAMOND**
Shape and Cutting Style **BAGUETTE**
Measurements **12.99 X 4.21 X 2.70 MM**

GRADING RESULTS

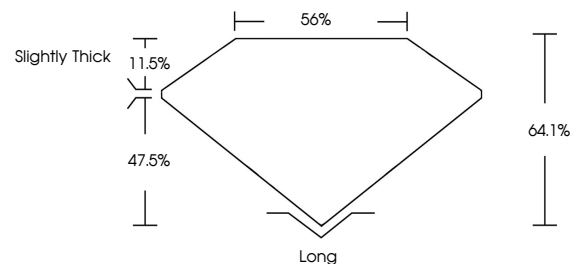
Carat Weight **1.57 CARAT**
Color Grade **F**
Clarity Grade **VS 1**

ADDITIONAL GRADING INFORMATION

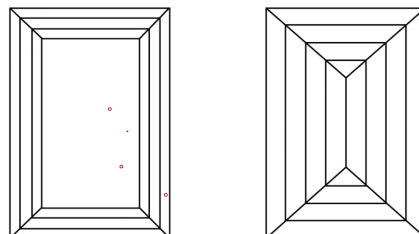
Polish **EXCELLENT**
Symmetry **EXCELLENT**
Fluorescence **NONE**
Inscription(s) **IGI LG760542939**

Comments: This Laboratory Grown Diamond was created by Chemical Vapor Deposition (CVD) growth process. Type IIa

PROPORTIONS

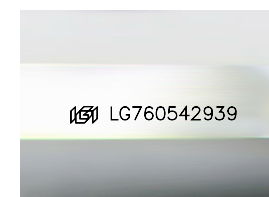


CLARITY CHARACTERISTICS



KEY TO SYMBOLS

Red symbols indicate internal characteristics.
Green symbols indicate external characteristics.



Sample Image Used

COLOR

D E F G H I J Faint Very Light Light

CLARITY

FL	IF	VS ¹⁻²	VS ¹⁻²	SI ¹⁻²	I ¹⁻³
Flawless	Internally Flawless	Very Very Slightly Included	Very Slightly Included	Slightly Included	Included

