



ELECTRONIC COPY

LG760542570
Report verification at igi.org



December 26, 2025
IGI Report Number **LG760542570**
Description **LABORATORY GROWN DIAMOND**
Shape and Cutting Style **MODIFIED PENTAGONAL STEP CUT**
Measurements **8.09 X 4.94 X 3.09 MM**
GRADING RESULTS
Carat Weight **1.05 CARAT**
Color Grade **D**
Clarity Grade **VVS 2**

LABORATORY GROWN DIAMOND REPORT

December 26, 2025
IGI Report Number **LG760542570**
Description **LABORATORY GROWN DIAMOND**
Shape and Cutting Style **MODIFIED PENTAGONAL STEP CUT**
Measurements **8.09 X 4.94 X 3.09 MM**

GRADING RESULTS

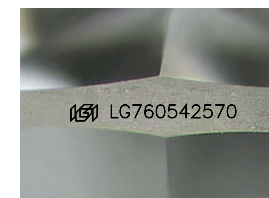
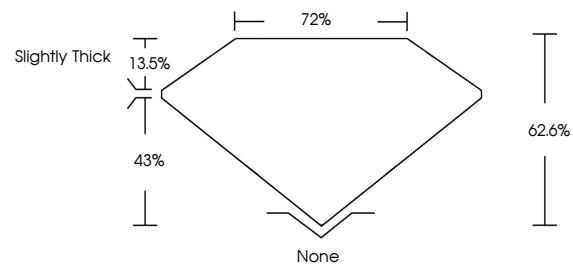
Carat Weight **1.05 CARAT**
Color Grade **D**
Clarity Grade **VVS 2**

ADDITIONAL GRADING INFORMATION

Polish **VERY GOOD**
Symmetry **VERY GOOD**
Fluorescence **NONE**
Inscription(s) **IGI LG760542570**

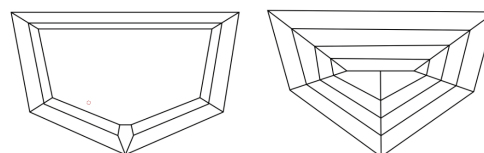
Comments: As Grown - No indication of post-growth treatment.
This Laboratory Grown Diamond was created by High Pressure High Temperature (HPHT) growth process.
Type II

PROPORTIONS



Sample Image Used

CLARITY CHARACTERISTICS



KEY TO SYMBOLS

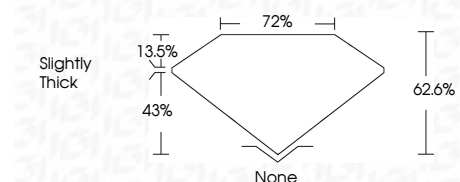
Red symbols indicate internal characteristics.
Green symbols indicate external characteristics.

COLOR

D E F G H I J Faint Very Light Light

CLARITY

FL	IF	VVS ¹⁻²	VS ¹⁻²	SI ¹⁻²	I ¹⁻³
Flawless	Internally Flawless	Very Very Slightly Included	Very Slightly Included	Slightly Included	Included



ADDITIONAL GRADING INFORMATION

Polish **VERY GOOD**
Symmetry **VERY GOOD**
Fluorescence **NONE**
Inscription(s) **IGI LG760542570**
Comments: As Grown - No indication of post-growth treatment.
This Laboratory Grown Diamond was created by High Pressure High Temperature (HPHT) growth process.
Type II



December 26, 2025
IGI Report No LG760542570
MODIFIED PENTAGONAL STEP CUT
8.09 X 4.94 X 3.09 MM
1.05 CARAT
D
VVS 2
62.6%
72%
Slightly Thick
None
VERY GOOD
VERY GOOD
NONE
IGI LG760542570
Comments: As Grown - No indication of post-growth treatment.
This Laboratory Grown Diamond was created by High Pressure High Temperature (HPHT) growth process.
Type II