



**ELECTRONIC COPY**

## LABORATORY GROWN DIAMOND REPORT

December 25, 2025	
IGI Report Number	LG760542209
Description	LABORATORY GROWN DIAMOND
Shape and Cutting Style	CUT CORNERED RECTANGULAR MODIFIED BRILLIANT
Measurements	7.93 X 5.41 X 3.63 MM

## GRADING RESULTS

Carat Weight	1.37 CARAT
Color Grade	D
Clarity Grade	VVS 2

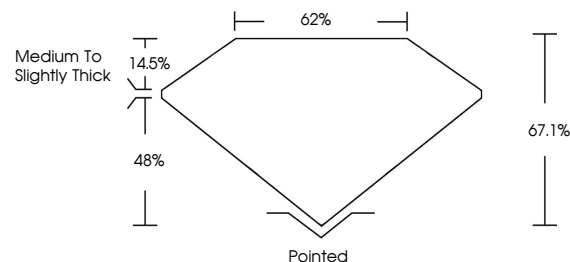
### ADDITIONAL GRADING INFORMATION

Polish	EXCELLENT
Symmetry	EXCELLENT
Fluorescence	NONE
Inscription(s)	 LG760542209

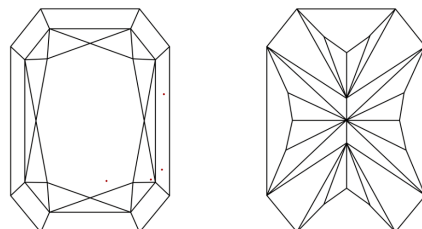
Comments: This Laboratory Grown Diamond was created by Chemical Vapor Deposition (CVD) growth process.  
Type IIa

LG760542209  
Report verification at [lgi.org](https://lgi.org)

## PROPORTIONS

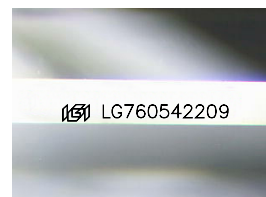


## CLARITY CHARACTERISTICS



## KEY TO SYMBOLS

Red symbols indicate internal characteristics.  
Green symbols indicate external characteristics.



Sample Image Used

## COLOR

D E F G H I J Faint Very Light Light

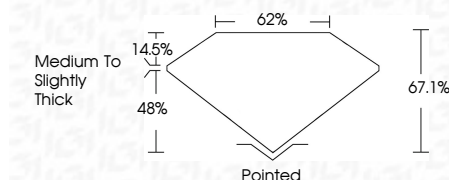
## CLARITY

FL	IF	VVS <sup>1-2</sup>	VS <sup>1-2</sup>	SI <sup>1-2</sup>	I <sup>1-3</sup>
Flawless	Internally Flawless	Very Very Slightly Included	Very Slightly Included	Slightly Included	Included

## LABORATORY GROWN DIAMOND REPORT



December 25, 2025	
IGI Report Number	LG760542209
Description	LABORATORY GROWN DIAMOND
Shape and Cutting Style	CUT CORNERED RECTANGULAR MODIFIED BRILLIANT
Measurements	7.93 X 5.41 X 3.63 MM
<b>GRADING RESULTS</b>	
Carat Weight	1.37 CARAT
Color Grade	D
Clarity Grade	VVS 2



### ADDITIONAL GRADING INFORMATION

Polish	EXCELLENT
Symmetry	EXCELLENT
Fluorescence	NONE
Inscription(s)	<del>(G)</del> LG760542209
Comments: This Laboratory Grown Diamond was created by Chemical Vapor Deposition (CVD) growth process.	
Type IIa	



© IGI 2020, International Gemological Institute

FD - 10 20

**www.igi.org**



THIS DOCUMENT WAS PRODUCED WITH THE FOLLOWING SECURITY MEASURES: SPECIAL DOCUMENT PAPER, INK SCREENS, WATERMARK, BACKGROUND DESIGNS, HOLOGRAM AND OTHER SECURITY FEATURES NOT LISTED AND DO EXCEED DOCUMENT SECURITY INDUSTRY GUIDELINES

<b>December 25, 2025</b>	<b>GI Report No L67R0542290</b>
<b>CUT CORNERED RECT. MODIFIED BRILLIANT</b>	
<b>9.98 X 6.41 X 3.43 MM</b>	
<b>Carat Weight</b>	<b>1.37 CARAT</b>
<b>Color Grade</b>	<b>D</b>
<b>Clarity Grade</b>	<b>VVS 2</b>
<b>Depth</b>	<b>67.1%</b>
<b>Table</b>	<b>62%</b>
<b>Girdle</b>	<b>Medium to Slightly Thick</b>
<b>Culet</b>	<b>Poished</b>
<b>Polish</b>	<b>EXCELLENT</b>
<b>Symmetry</b>	<b>EXCELLENT</b>
<b>Fluorescence</b>	<b>NONE</b>
<a href="#">View L67R0542290 Details</a>	

**Comments:**  
This Laboratory Grown Diamond was  
created by Chemical Vapor Deposition  
(CVD) growth process.