



December 24, 2025

**IGI Report Number** LG760537211  
**ROUND BRILLIANT**  
**LABORATORY GROWN DIAMOND**  
**4.79 - 4.82 X 3.00 MM**

**0.43 CARAT**  
**D**  
**VVS 1**  
**IDEAL**  
**EXCELLENT**  
**EXCELLENT**  
**NONE**  
**Inscription(s)** IGI LG760537211

Comments: This Laboratory Grown Diamond was created by Chemical Vapor Deposition (CVD) growth process. Type IIa

**LABORATORY GROWN DIAMOND REPORT**

December 24, 2025  
IGI Report Number **LG760537211**  
Description **LABORATORY GROWN DIAMOND**  
Shape and Cutting Style **ROUND BRILLIANT**  
Measurements **4.79 - 4.82 X 3.00 MM**

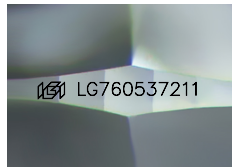
**GRADING RESULTS**

Carat Weight **0.43 CARAT**  
Color Grade **D**  
Clarity Grade **VVS 1**  
Cut Grade **IDEAL**

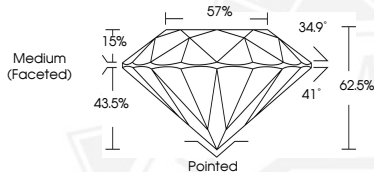
**ADDITIONAL GRADING INFORMATION**

Polish **EXCELLENT**  
Symmetry **EXCELLENT**  
Fluorescence **NONE**  
Inscription(s) **IGI LG760537211**

Comments: This Laboratory Grown Diamond was created by Chemical Vapor Deposition (CVD) growth process. Type IIa



Sample Image Used



December 24, 2025

**IGI Report Number** LG760537211  
**ROUND BRILLIANT**  
**LABORATORY GROWN DIAMOND**  
**4.79 - 4.82 X 3.00 MM**

**0.43 CARAT**  
**D**  
**VVS 1**  
**IDEAL**  
**EXCELLENT**  
**EXCELLENT**  
**NONE**  
**Inscription(s)** IGI LG760537211

Comments: This Laboratory Grown Diamond was created by Chemical Vapor Deposition (CVD) growth process. Type IIa



THIS DOCUMENT WAS PRODUCED WITH THE FOLLOWING SECURITY MEASURES: SPECIAL DOCUMENT PAPER, INK SCREENS, WATERMARK, BACKGROUND DESIGNS, HOLOGRAM AND OTHER SECURITY FEATURES NOT LISTED AND DO EXCEED DOCUMENT SECURITY INDUSTRY GUIDELINES.