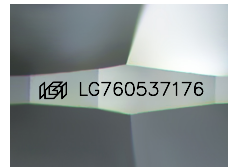




**December 26, 2025**  
**IGI Report Number LG760537176**  
**ROUND BRILLIANT**  
**LABORATORY GROWN DIAMOND**  
**4.90 - 4.93 X 3.04 MM**  
**0.45 CARAT**  
**D**  
**VVS 1**  
**IDEAL**  
**EXCELLENT**  
**EXCELLENT**  
**NONE**  
**Inscription(s) IGI LG760537176**

**LABORATORY GROWN DIAMOND REPORT**

December 26, 2025  
 IGI Report Number **LG760537176**  
 Description **LABORATORY GROWN DIAMOND**  
 Shape and Cutting Style **ROUND BRILLIANT**  
 Measurements **4.90 - 4.93 X 3.04 MM**



Sample Image Used

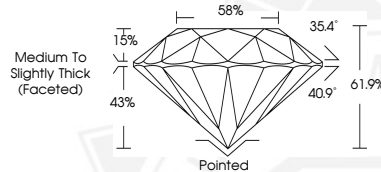
**GRADING RESULTS**

Carat Weight **0.45 CARAT**  
 Color Grade **D**  
 Clarity Grade **VVS 1**  
 Cut Grade **IDEAL**

**ADDITIONAL GRADING INFORMATION**

Polish **EXCELLENT**  
 Symmetry **EXCELLENT**  
 Fluorescence **NONE**  
 Inscription(s) **IGI LG760537176**

Comments: This Laboratory Grown Diamond was created by Chemical Vapor Deposition (CVD) growth process. Type IIa



**December 26, 2025**  
**IGI Report Number LG760537176**  
**ROUND BRILLIANT**  
**LABORATORY GROWN DIAMOND**  
**4.90 - 4.93 X 3.04 MM**  
**0.45 CARAT**  
**D**  
**VVS 1**  
**IDEAL**  
**EXCELLENT**  
**EXCELLENT**  
**NONE**  
**Inscription(s) IGI LG760537176**

Comments: This Laboratory Grown Diamond was created by Chemical Vapor Deposition (CVD) growth process. Type IIa

THIS DOCUMENT WAS PRODUCED WITH THE FOLLOWING SECURITY MEASURES: SPECIAL DOCUMENT PAPER, INK SCREENS, WATERMARK, BACKGROUND DESIGNS, HOLOGRAM AND OTHER SECURITY FEATURES NOT LISTED AND DO EXCEED DOCUMENT SECURITY INDUSTRY GUIDELINES.