



**ELECTRONIC COPY**

LG760535943  
Report verification at igi.org



December 29, 2025

IGI Report Number **LG760535943**

Description **LABORATORY GROWN DIAMOND**

Shape and Cutting Style **CUT CORNERED  
RECTANGULAR MODIFIED  
BRILLIANT**

Measurements **9.85 X 7.31 X 4.87 MM**

**GRADING RESULTS**

Carat Weight **3.01 CARATS**

Color Grade **F**

Clarity Grade **VS 1**

December 29, 2025  
IGI Report Number **LG760535943**  
Description **LABORATORY GROWN DIAMOND**  
Shape and Cutting Style **CUT CORNERED RECTANGULAR  
MODIFIED BRILLIANT**  
Measurements **9.85 X 7.31 X 4.87 MM**

**GRADING RESULTS**

Carat Weight **3.01 CARATS**

Color Grade **F**

Clarity Grade **VS 1**

**ADDITIONAL GRADING INFORMATION**

Polish **EXCELLENT**

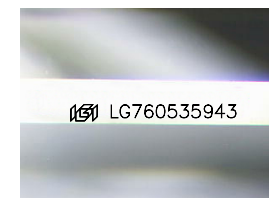
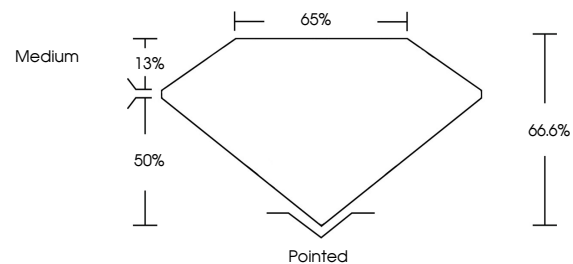
Symmetry **EXCELLENT**

Fluorescence **NONE**

Inscription(s) **IGI LG760535943**

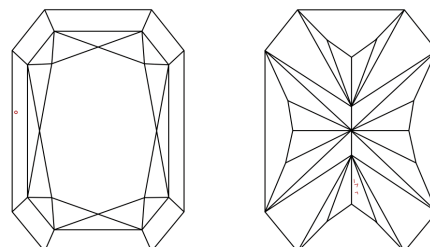
Comments: This Laboratory Grown Diamond was created by Chemical Vapor Deposition (CVD) growth process. Type IIa

**PROPORTIONS**



Sample Image Used

**CLARITY CHARACTERISTICS**



**KEY TO SYMBOLS**

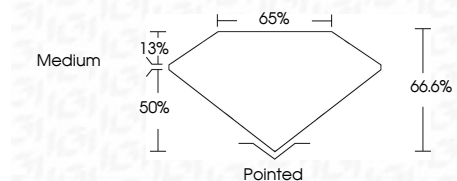
Red symbols indicate internal characteristics.  
Green symbols indicate external characteristics.

**COLOR**

D E F G H I J Faint Very Light Light

**CLARITY**

FL	IF	VS <sup>1-2</sup>	VS <sup>1-2</sup>	SI <sup>1-2</sup>	I <sup>1-3</sup>
Flawless	Internally Flawless	Very Very Slightly Included	Very Slightly Included	Slightly Included	Included



**ADDITIONAL GRADING INFORMATION**

Polish **EXCELLENT**

Symmetry **EXCELLENT**

Fluorescence **NONE**

Inscription(s) **IGI LG760535943**

Comments: This Laboratory Grown Diamond was created by Chemical Vapor Deposition (CVD) growth process. Type IIa



**IGI**



December 29, 2025  
IGI Report No LG760535943  
CUT CORNERED RECT. MODIFIED BRILLIANT  
9.85 X 7.31 X 4.87 MM  
3.01 CARATS  
F  
Color Grade  
VS 1  
Clarity Grade  
66.6%  
50%  
Depth  
Medium  
Table  
Girdle  
Pointed  
Culet  
EXCELLENT  
Polish  
EXCELLENT  
Symmetry  
NONE  
Fluorescence  
IGI LG760535943  
Inscription(s)

Comments: This Laboratory Grown Diamond was created by Chemical Vapor Deposition (CVD) growth process. Type IIa