

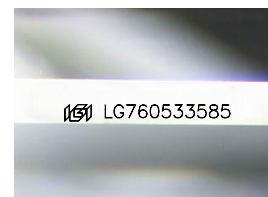
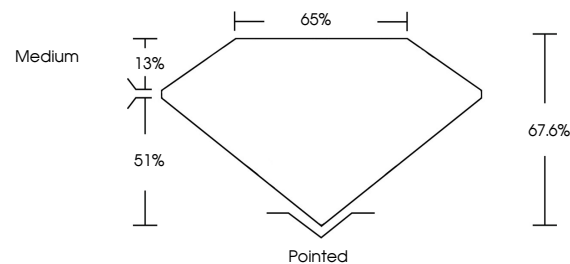


**ELECTRONIC COPY**

## LABORATORY GROWN DIAMOND REPORT

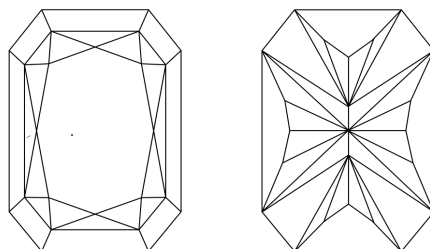
LG760533585  
Report verification at [igi.org](https://igi.org)

## PROPORTIONS



Sample Image Used

## CLARITY CHARACTERISTICS



## KEY TO SYMBOLS

Red symbols indicate internal characteristics.  
Green symbols indicate external characteristics.

## COLOR

D E F G H I J Faint Very Light Light

## CLARITY

FL	IF	VVS <sup>1-2</sup>	VS <sup>1-2</sup>	SI <sup>1-2</sup>	I <sup>1-3</sup>
Flawless	Internally Flawless	Very Very Slightly Included	Very Slightly Included	Slightly Included	Included

## LABORATORY GROWN DIAMOND REPORT



December 25, 2025

IGI Report Number **LG760533585**Description **LABORATORY GROWN DIAMOND**

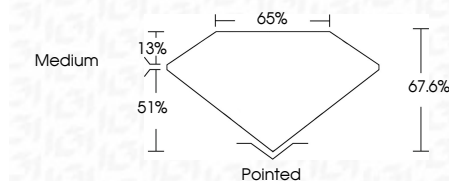
Shape and Cutting Style

Measurements 11.42 X 7.87 X 5.32 MM

## GRADING RESULTS

Carat Weight **4.09 CARATS**

Color Grade E

Clarity Grade VVS 2

### ADDITIONAL GRADING INFORMATION

Polish EXCELLENT

Symmetry **EXCELLENT**Fluorescence NONEInscription(s)  LG760533585

Comments: This Laboratory Grown Diamond was created by Chemical Vapor Deposition (CVD) growth process.  
Type IIa



© IGI 2020, International Gemological Institute

FD - 10 20

**www.igi.org**

THIS DOCUMENT WAS PRODUCED WITH THE FOLLOWING SECURITY MEASURES: SPECIAL DOCUMENT PAPER, INK SCREENS, WATERMARK, BACKGROUND DESIGNS, HOLOGRAM AND OTHER SECURITY FEATURES NOT LISTED AND DO EXCEED DOCUMENT SECURITY INDUSTRY GUIDELINE

December 25, 2025	4.09 CARATS
GI REPORT NO. LG7A033585	
OUT CORNERED RECT. MODIFIED BRILLIANT	
1.42 X 7.87 X 5.32 MM	
Carat Weight	
Color Grade	E
Clarity Grade	VVS 2
Depth	67.6%
Table	65%
Grade	Medium
Quiet	Poined
Polish	EXCELLENT
Symmetry	EXCELLENT
Fluorescence	NONE
Inscriptions(s)	681 LG7A033585

Comments: Very Fine Growth Pattern was created by Chemical Vapor Deposition (CVD) growth process.

Type IIa