



**ELECTRONIC COPY**

## LABORATORY GROWN DIAMOND REPORT

|                         |                          |
|-------------------------|--------------------------|
| December 23, 2025       |                          |
| IGI Report Number       | LG760533110              |
| Description             | LABORATORY GROWN DIAMOND |
| Shape and Cutting Style | ROUND BRILLIANT          |
| Measurements            | 6.40 - 6.46 X 4.02 MM    |

## GRADING RESULTS

|               |            |
|---------------|------------|
| Carat Weight  | 1.03 CARAT |
| Color Grade   | D          |
| Clarity Grade | VVS 2      |
| Cut Grade     | EXCELLENT  |

### ADDITIONAL GRADING INFORMATION

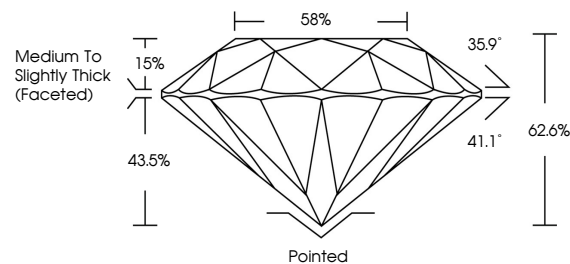
|                |   |
|----------------|---|
| Polish         | EXCELLENT   |
| Symmetry       | EXCELLENT   |
| Fluorescence   | NONE  |
| Inscription(s) |  LG760533110 |

Comments: As Grown - No indication of post-growth treatment.

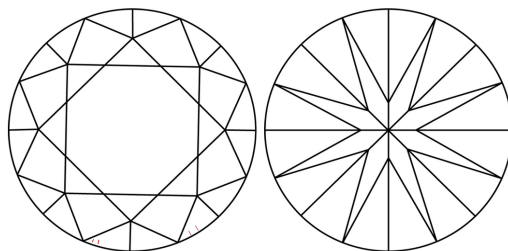
This Laboratory Grown Diamond was created by High Pressure High Temperature (HPHT) growth process.  
Type II

LG760533110  
Report verification at [igi.org](http://igi.org)

## PROPORTIONS

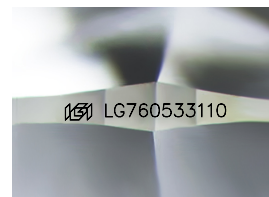


## CLARITY CHARACTERISTICS



## KEY TO SYMBOLS

Red symbols indicate internal characteristics.  
Green symbols indicate external characteristics.



Sample Image Used

**COLOR**

D E F G H I J Faint Very Light Light

## CLARITY

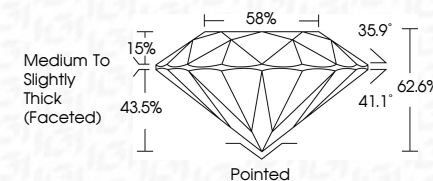
| FL       | IF                  | VVS <sup>1-2</sup>          | VS <sup>1-2</sup>      | SI <sup>1-2</sup> | I <sup>1-3</sup> |
|----------|---------------------|-----------------------------|------------------------|-------------------|------------------|
| Flawless | Internally Flawless | Very Very Slightly Included | Very Slightly Included | Slightly Included | Included         |



|                         |                          |
|-------------------------|--------------------------|
| December 23, 2025       |                          |
| IGI Report Number       | LG760533110              |
| Description             | LABORATORY GROWN DIAMOND |
| Shape and Cutting Style | ROUND BRILLIANT          |
| Measurements            | 6.40 - 6.46 X 4.02 MM    |

## GRADING RESULTS

|               |            |
|---------------|------------|
| Carat Weight  | 1.03 CARAT |
| Color Grade   | D          |
| Clarity Grade | VVS 2      |
| Cut Grade     | EXCELLENT  |



### ADDITIONAL GRADING INFORMATION

|  |   |
|--|---|
| Polish   | EXCELLENT   |
| Symmetry   | EXCELLENT   |
| Fluorescence   | NONE  |
| Inscription(s)   |  LG760533110 |
| Comments: As Grown - No indication of post-growth treatment.                                       |   |
| This Laboratory Grown Diamond was created by High Pressure High Temperature (HPHT) growth process. |   |
| Type II  |   |



IG



© IGI 2020, International Gemological Institute

FD - 10 20



THIS DOCUMENT WAS PRODUCED WITH THE FOLLOWING SECURITY MEASURES: SPECIAL DOCUMENT PAPER, INK SCREENS, WATERMARK, BACKGROUND DESIGNS, HOLOGRAM AND OTHER SECURITY FEATURES NOT LISTED AND DO EXCEED DOCUMENT SECURITY INDUSTRY GUIDELINES

**www.igi.org**

December 23, 2025  
IGI Report No LG760533110  
ROUND BRILLIANT

|                       |               |                                    |
|-----------------------|---------------|------------------------------------|
| 6.40 - 6.46 X 4.02 MM | Carat Weight  | 1.03 CARAT                         |
|                       | Color Grade   | D                                  |
|                       | Clarity Grade | VVS 2                              |
|                       | Cut Grade     | EXCELLENT                          |
|                       | Depth         | 62.0%                              |
|                       | Table         | 58%                                |
|                       | Girdle        | Medium To Slightly Thick (faceted) |
|                       | Culet         | Pointed                            |
|                       | Polish        | EXCELLENT                          |
|                       | Symmetry      | EXCELLENT                          |
|                       | Fluorescence  | NONE                               |
|                       | Comments      | See L2740983110                    |

**Comments:**  
As Grown - No indication of post-growth treatment.  
This Laboratory Grown Diamond was created by High Pressure High Temperature (HPHT) growth process.