



**ELECTRONIC COPY**

**LABORATORY GROWN DIAMOND REPORT**

December 30, 2025  
IGI Report Number **LG760531584**

Description **LABORATORY GROWN DIAMOND**

Shape and Cutting Style **CUT CORNERED RECTANGULAR  
MODIFIED BRILLIANT**

Measurements **7.97 X 5.64 X 3.87 MM**

**GRADING RESULTS**

Carat Weight **1.50 CARAT**

Color Grade **D**

Clarity Grade **INTERNALLY FLAWLESS**

**ADDITIONAL GRADING INFORMATION**

Polish **EXCELLENT**

Symmetry **EXCELLENT**

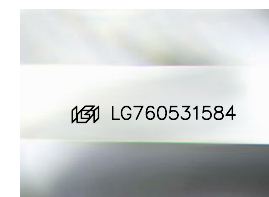
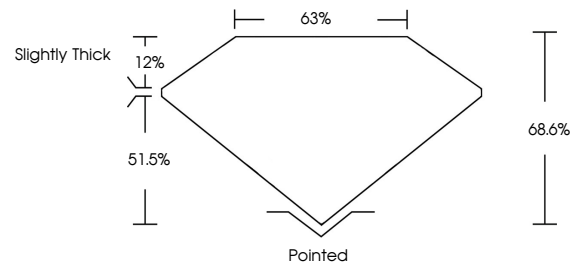
Fluorescence **NONE**

Inscription(s) **IGI LG760531584**

Comments: As Grown - No indication of post-growth treatment.

This Laboratory Grown Diamond was created by High Pressure High Temperature (HPHT) growth process. Type II

**PROPORTIONS**



Sample Image Used

**COLOR**

D E F G H I J Faint Very Light Light

**CLARITY**

FL	IF	VS <sup>1-2</sup>	VS <sup>1-2</sup>	SI <sup>1-2</sup>	I <sup>1-3</sup>
Flawless	Internally Flawless	Very Very Slightly Included	Very Slightly Included	Slightly Included	Included



December 30, 2025

IGI Report Number **LG760531584**

Description **LABORATORY GROWN DIAMOND**

Shape and Cutting Style **CUT CORNERED  
RECTANGULAR MODIFIED  
BRILLIANT**

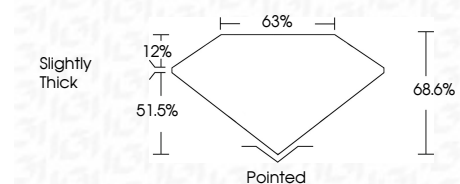
Measurements **7.97 X 5.64 X 3.87 MM**

**GRADING RESULTS**

Carat Weight **1.50 CARAT**

Color Grade **D**

Clarity Grade **INTERNALLY FLAWLESS**



**ADDITIONAL GRADING INFORMATION**

Polish **EXCELLENT**

Symmetry **EXCELLENT**

Fluorescence **NONE**

Inscription(s) **IGI LG760531584**

Comments: As Grown - No indication of post-growth treatment.

This Laboratory Grown Diamond was created by High Pressure High Temperature (HPHT) growth process. Type II



**IGI**



December 30, 2025  
IGI Report No LG760531584  
CUT CORNERED RECT. MODIFIED BRILLIANT  
7.97 X 5.64 X 3.87 MM  
Carat Weight 1.50 CARAT  
Color Grade D  
Clarity Grade IF  
Depth 68.6%  
Table 63%  
Girdle Slightly Thick  
Culet Pointed  
Polish EXCELLENT  
Symmetry EXCELLENT  
Fluorescence NONE  
Inscription(s) IGI LG760531584

Comments: As Grown - No indication of post-growth treatment.  
This Laboratory Grown Diamond was created by High Pressure High Temperature (HPHT) growth process. Type II