



January 24, 2026

IGI Report Number LG760530105
**CUT CORNERED RECTANGULAR
MODIFIED BRILLIANT
LABORATORY GROWN DIAMOND**
5.49 X 3.91 X 2.72 MM

Carat Weight 0.55 CARAT
Color Grade FANCY INTENSE

Clarity Grade PINK

Cut Grade VVS 2

Polish VERY GOOD

Symmetry EXCELLENT

Fluorescence SLIGHT

Inscription(s) IGI LG760530105

Comments: This Laboratory Grown Diamond was created by Chemical Vapor Deposition (CVD) growth process. Indications of post-growth treatment.

LABORATORY GROWN DIAMOND REPORT

January 24, 2026

IGI Report Number **LG760530105**

Description **LABORATORY GROWN DIAMOND**

Shape and Cutting Style **CUT CORNERED RECTANGULAR MODIFIED
BRILLIANT**

Measurements **5.49 X 3.91 X 2.72 MM**

GRADING RESULTS

Carat Weight 0.55 CARAT

Color Grade FANCY INTENSE PINK

Clarity Grade VVS 2

Cut Grade VERY GOOD

ADDITIONAL GRADING INFORMATION

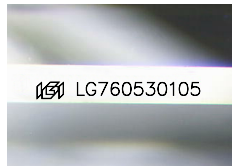
Polish VERY GOOD

Symmetry EXCELLENT

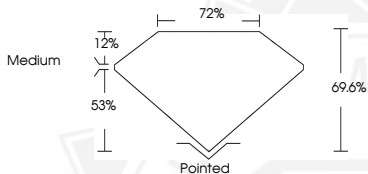
Fluorescence SLIGHT

Inscription(s) IGI LG760530105

Comments: This Laboratory Grown Diamond was created by Chemical Vapor Deposition (CVD) growth process. Indications of post-growth treatment.



Sample Image Used



January 24, 2026

IGI Report Number LG760530105
**CUT CORNERED RECTANGULAR
MODIFIED BRILLIANT
LABORATORY GROWN DIAMOND**
5.49 X 3.91 X 2.72 MM

Carat Weight 0.55 CARAT
Color Grade FANCY INTENSE

Clarity Grade PINK

Cut Grade VVS 2

Polish VERY GOOD

Symmetry EXCELLENT

Fluorescence SLIGHT

Inscription(s) IGI LG760530105

Comments: This Laboratory Grown Diamond was created by Chemical Vapor Deposition (CVD) growth process. Indications of post-growth treatment.

THIS DOCUMENT WAS PRODUCED WITH THE FOLLOWING SECURITY MEASURES: SPECIAL DOCUMENT PAPER, INK SCREENS, WATERMARK, BACKGROUND DESIGNS, HOLOGRAM AND OTHER SECURITY FEATURES NOT LISTED AND DO EXCEED DOCUMENT SECURITY INDUSTRY GUIDELINES.