



ELECTRONIC COPY

LG760524295
Report verification at igi.org



February 11, 2026
IGI Report Number **LG760524295**
Description **LABORATORY GROWN DIAMOND**
Shape and Cutting Style **CUT CORNERED
RECTANGULAR MIXED CUT**
Measurements **10.78 X 7.80 X 5.14 MM**
GRADING RESULTS
Carat Weight **4.08 CARATS**
Color Grade **FANCY INTENSE YELLOW**
Clarity Grade **VS 2**

LABORATORY GROWN DIAMOND REPORT

February 11, 2026
IGI Report Number **LG760524295**
Description **LABORATORY GROWN DIAMOND**
Shape and Cutting Style **CUT CORNERED RECTANGULAR
MIXED CUT**
Measurements **10.78 X 7.80 X 5.14 MM**

GRADING RESULTS

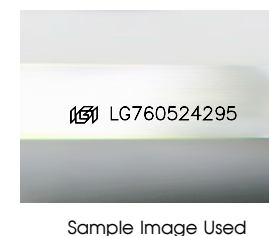
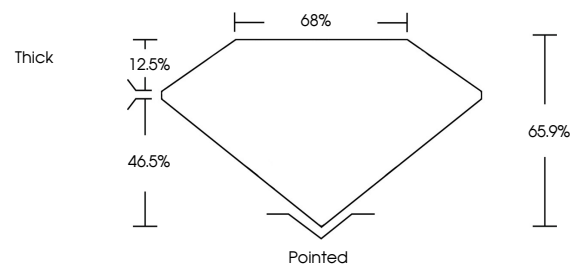
Carat Weight **4.08 CARATS**
Color Grade **FANCY INTENSE YELLOW**
Clarity Grade **VS 2**

ADDITIONAL GRADING INFORMATION

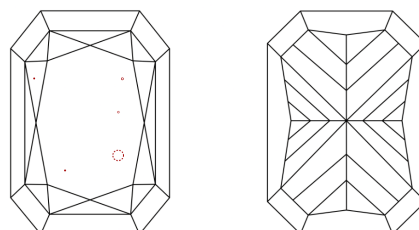
Polish **EXCELLENT**
Symmetry **EXCELLENT**
Fluorescence **NONE**
Inscription(s) **IGI LG760524295**

Comments: This Laboratory Grown Diamond was created by Chemical Vapor Deposition (CVD) growth process.

PROPORTIONS



CLARITY CHARACTERISTICS



KEY TO SYMBOLS

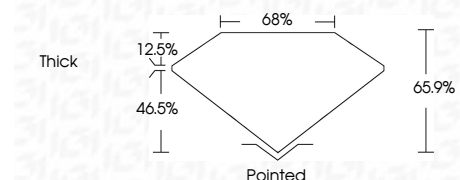
Red symbols indicate internal characteristics.
Green symbols indicate external characteristics.

COLOR

D E F G H I J Faint Very Light Light

CLARITY

FL	IF	VS ¹⁻²	VS ¹⁻²	SI ¹⁻²	I ¹⁻³
Flawless	Internally Flawless	Very Very Slightly Included	Very Slightly Included	Slightly Included	Included



ADDITIONAL GRADING INFORMATION

Polish **EXCELLENT**
Symmetry **EXCELLENT**
Fluorescence **NONE**
Inscription(s) **IGI LG760524295**
Comments: This Laboratory Grown Diamond was created by Chemical Vapor Deposition (CVD) growth process.



February 11, 2026
IGI Report No **LG760524295**
CUT CORNERED RECT. MIXED CUT
4.08 CARATS
Carat Weight **FANCY INTENSE YELLOW**
Color Grade **VS 2**
Depth **65.9%**
Table **65%**
Girdle **Thick**
Culet **Pointed**
Polish **EXCELLENT**
Symmetry **EXCELLENT**
Fluorescence **NONE**
Inscription(s) **IGI LG760524295**
Comments: This Laboratory Grown Diamond was created by Chemical Vapor Deposition (CVD) growth process.