



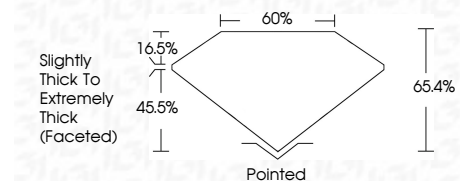
ELECTRONIC COPY

LG760523564
Report verification at igi.org



February 6, 2026
IGI Report Number **LG760523564**
Description **LABORATORY GROWN DIAMOND**
Shape and Cutting Style **CUSHION MODIFIED BRILLIANT**
Measurements **8.92 X 6.24 X 4.08 MM**

GRADING RESULTS
Carat Weight **1.82 CARAT**
Color Grade **H**
Clarity Grade **VS 2**



ADDITIONAL GRADING INFORMATION
Polish **EXCELLENT**
Symmetry **EXCELLENT**
Fluorescence **NONE**
Inscription(s) **IGI LG760523564**
Comments: This Laboratory Grown Diamond was created by Chemical Vapor Deposition (CVD) growth process. Type IIa



February 6, 2026
IGI Report No LG760523564
CUSHION MODIFIED BRILLIANT
8.92 X 6.24 X 4.08 MM
1.82 CARAT H
VS 2 65.4% 16.5%
Slightly Thick To Extremely Thick (Faceted) Pointed
EXCELLENT EXCELLENT
NONE
IGI LG760523564
Comments: This Laboratory Grown Diamond was created by Chemical Vapor Deposition (CVD) growth process. Type IIa

LABORATORY GROWN DIAMOND REPORT

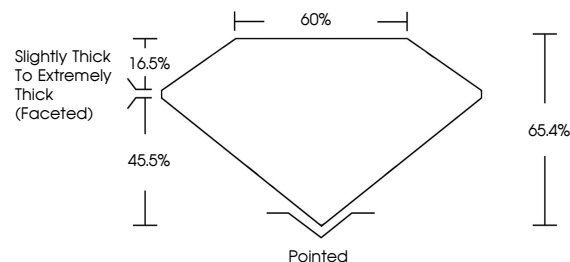
February 6, 2026
IGI Report Number **LG760523564**
Description **LABORATORY GROWN DIAMOND**
Shape and Cutting Style **CUSHION MODIFIED BRILLIANT**
Measurements **8.92 X 6.24 X 4.08 MM**

GRADING RESULTS
Carat Weight **1.82 CARAT**
Color Grade **H**
Clarity Grade **VS 2**

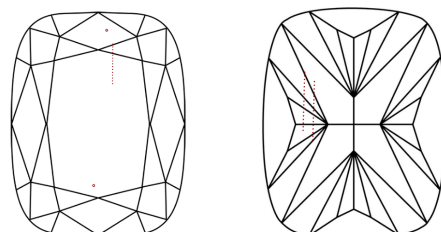
ADDITIONAL GRADING INFORMATION
Polish **EXCELLENT**
Symmetry **EXCELLENT**
Fluorescence **NONE**
Inscription(s) **IGI LG760523564**

Comments: This Laboratory Grown Diamond was created by Chemical Vapor Deposition (CVD) growth process. Type IIa

PROPORTIONS

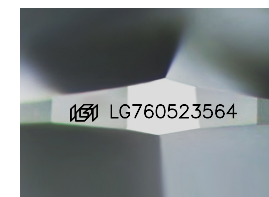


CLARITY CHARACTERISTICS



KEY TO SYMBOLS

Red symbols indicate internal characteristics.
Green symbols indicate external characteristics.



Sample Image Used

COLOR

D E F G H I J Faint Very Light Light

CLARITY

FL	IF	VS ¹⁻²	VS ¹⁻²	SI ¹⁻²	I ¹⁻³
Flawless	Internally Flawless	Very Very Slightly Included	Very Slightly Included	Slightly Included	Included

