



ELECTRONIC COPY

LG760523401
Report verification at igi.org



January 24, 2026

IGI Report Number **LG760523401**

Description **LABORATORY GROWN DIAMOND**

Shape and Cutting Style **ROUND BRILLIANT**

Measurements **10.12 - 10.23 X 6.20 MM**

GRADING RESULTS

Carat Weight **4.00 CARATS**

Color Grade **G**

Clarity Grade **VS 2**

Cut Grade **VERY GOOD**

January 24, 2026
IGI Report Number **LG760523401**
Description **LABORATORY GROWN DIAMOND**
Shape and Cutting Style **ROUND BRILLIANT**
Measurements **10.12 - 10.23 X 6.20 MM**

GRADING RESULTS

Carat Weight **4.00 CARATS**

Color Grade **G**

Clarity Grade **VS 2**

Cut Grade **VERY GOOD**

ADDITIONAL GRADING INFORMATION

Polish **EXCELLENT**

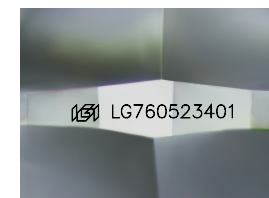
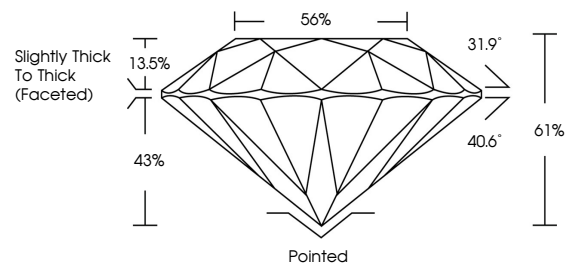
Symmetry **EXCELLENT**

Fluorescence **NONE**

Inscription(s) **IGI LG760523401**

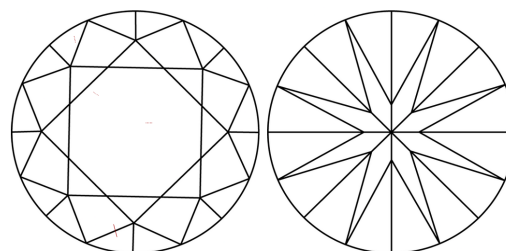
Comments: This Laboratory Grown Diamond was created by Chemical Vapor Deposition (CVD) growth process. Type IIa

PROPORTIONS



Sample Image Used

CLARITY CHARACTERISTICS



KEY TO SYMBOLS

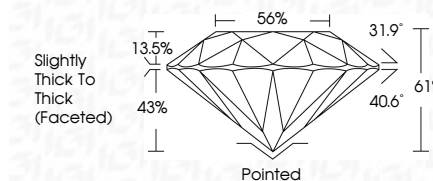
Red symbols indicate internal characteristics.
Green symbols indicate external characteristics.

COLOR

D E F G H I J Faint Very Light Light

CLARITY

FL	IF	VS ¹⁻²	VS ¹⁻²	SI ¹⁻²	I ¹⁻³
Flawless	Internally Flawless	Very Very Slightly Included	Very Slightly Included	Slightly Included	Included



ADDITIONAL GRADING INFORMATION

Polish **EXCELLENT**

Symmetry **EXCELLENT**

Fluorescence **NONE**

Inscription(s) **IGI LG760523401**

Comments: This Laboratory Grown Diamond was created by Chemical Vapor Deposition (CVD) growth process. Type IIa



IGI



January 24, 2026
IGI Report No LG760523401
ROUND BRILLIANT

4.00 CARATS
G

10.12 - 10.23 X 6.20 MM

VS 2
VERY GOOD

61%
56%

Slightly Thick To Thick (Faceted)

Pointed
EXCELLENT
EXCELLENT
NONE

IGI LG760523401

Comments: This Laboratory Grown Diamond was created by Chemical Vapor Deposition (CVD) growth process. Type IIa