

**ELECTRONIC COPY**

## LABORATORY GROWN DIAMOND REPORT

January 10, 2026	
IGI Report Number	LG760522638
Description	LABORATORY GROWN DIAMOND
Shape and Cutting Style	ROUND BRILLIANT
Measurements	6.47 - 6.53 X 3.90 MM

## GRADING RESULTS

Carat Weight	1.02 CARAT
Color Grade	D
Clarity Grade	VVS 2
Cut Grade	EXCELLENT

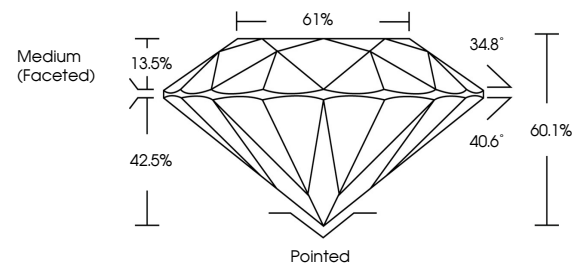
### ADDITIONAL GRADING INFORMATION

Polish	EXCELLENT
Symmetry	EXCELLENT
Fluorescence	NONE
Inscription(s)	 LG760522638

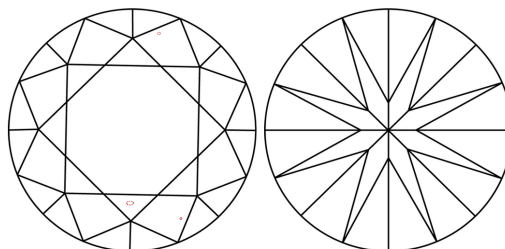
Comments: This Laboratory Grown Diamond was created by Chemical Vapor Deposition (CVD) growth process.  
Type IIa

LG760522638  
Report verification at [igi.org](https://igi.org)

## PROPORTIONS

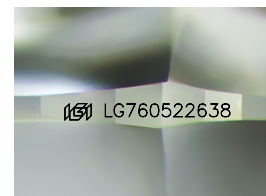


## CLARITY CHARACTERISTICS



## KEY TO SYMBOLS

Red symbols indicate internal characteristics.  
Green symbols indicate external characteristics.



Sample Image Used

## COLOR

D E F G H I J Faint Very Light Light

## CLARITY

FL	IF	VVS <sup>1-2</sup>	VS <sup>1-2</sup>	SI <sup>1-2</sup>	I <sup>1-3</sup>
Flawless	Internally Flawless	Very Very Slightly Included	Very Slightly Included	Slightly Included	Included

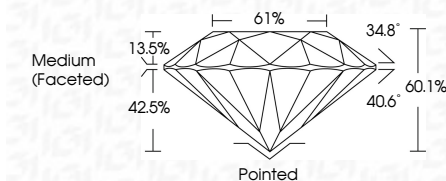
## LABORATORY GROWN DIAMOND REPORT




January 10, 2026	
IGI Report Number	LG760522638
Description	LABORATORY GROWN DIAMOND
Shape and Cutting Style	ROUND BRILLIANT
Measurements	6.47 - 6.53 X 3.90 MM

## GRADING RESULTS

Carat Weight	1.02 CARAT
Color Grade	D
Clarity Grade	VVS 2
Cut Grade	EXCELLENT



### ADDITIONAL GRADING INFORMATION

Polish	EXCELLENT
Symmetry	EXCELLENT
Fluorescence	NONE
Inscription(s)	 LG760522638
<p>Comments: This Laboratory Grown Diamond was created by Chemical Vapor Deposition (CVD) growth process.</p> <p>Type IIa</p>	



© IGI 2020, International Gemmological Institute

FD - 10 20

January 10, 2026  
GI Report No LG760522638  
ROUND BRILLIANT

ROUND BRILLIANT	6.47 - 6.63 X 3.90 MM	1.02 CARAT
Color Weight		D
Color Grade		VVS 2
Clarity Grade		EXCELLENT
Cut Grade		60.1%
Depth		61%
Table		Medium (Faceted)
Girdle		
Culet		Pointed
Polish		EXCELLENT
Symmetry		EXCELLENT
Fluorescence		NONE

**Comments:**  
This Laboratory Grown Diamond was  
created by Chemical Vapor Deposition  
(CVD) growth process.