



ELECTRONIC COPY

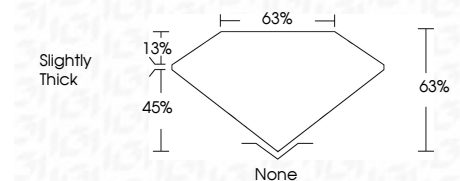
LG760522548
Report verification at igi.org



January 11, 2026
IGI Report Number **LG760522548**
Description **LABORATORY GROWN DIAMOND**
Shape and Cutting Style **DODECAHEDRAL STEP CUT**
Measurements **9.78 X 6.64 X 4.18 MM**

GRADING RESULTS

Carat Weight **2.05 CARATS**
Color Grade **D**
Clarity Grade **VVS 2**



ADDITIONAL GRADING INFORMATION

Polish **EXCELLENT**
Symmetry **EXCELLENT**
Fluorescence **NONE**
Inscription(s) **(IGI) LG760522548**
Comments: This Laboratory Grown Diamond was created by Chemical Vapor Deposition (CVD) growth process. Type IIa



January 11, 2026
IGI Report No LG760522548
DODECAHEDRAL STEP CUT
9.78 X 6.64 X 4.18 MM
2.05 CARATS
D
VVS 2
63%
63%
Slightly Thick
None
EXCELLENT
EXCELLENT
NONE
(IGI) LG760522548
Comments: This Laboratory Grown Diamond was created by Chemical Vapor Deposition (CVD) growth process. Type IIa

January 11, 2026
IGI Report Number **LG760522548**
Description **LABORATORY GROWN DIAMOND**
Shape and Cutting Style **DODECAHEDRAL STEP CUT**
Measurements **9.78 X 6.64 X 4.18 MM**

GRADING RESULTS

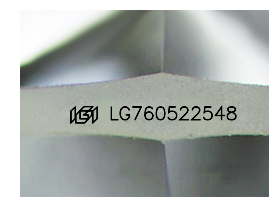
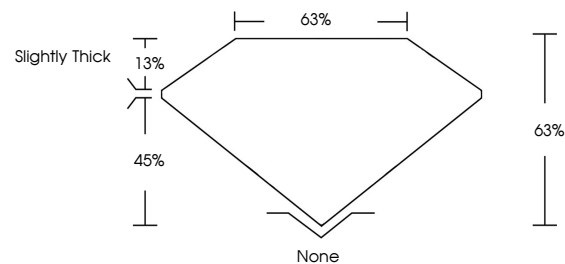
Carat Weight **2.05 CARATS**
Color Grade **D**
Clarity Grade **VVS 2**

ADDITIONAL GRADING INFORMATION

Polish **EXCELLENT**
Symmetry **EXCELLENT**
Fluorescence **NONE**
Inscription(s) **(IGI) LG760522548**

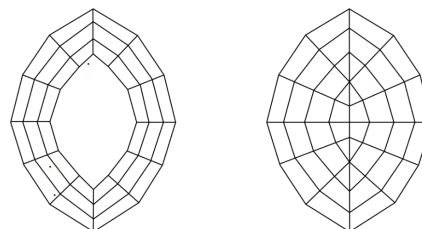
Comments: This Laboratory Grown Diamond was created by Chemical Vapor Deposition (CVD) growth process. Type IIa

PROPORTIONS



Sample Image Used

CLARITY CHARACTERISTICS



KEY TO SYMBOLS

Red symbols indicate internal characteristics.
Green symbols indicate external characteristics.

COLOR

D E F G H I J Faint Very Light Light

CLARITY

| FL | IF | VVS ¹⁻² | VS ¹⁻² | SI ¹⁻² | I ¹⁻³ |
|----------|---------------------|-----------------------------|------------------------|-------------------|------------------|
| Flawless | Internally Flawless | Very Very Slightly Included | Very Slightly Included | Slightly Included | Included |

