

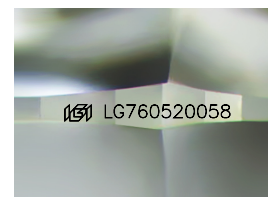
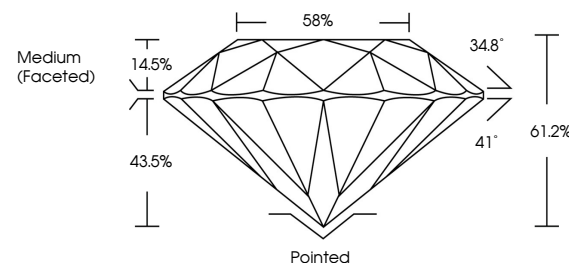


ELECTRONIC COPY

LABORATORY GROWN DIAMOND REPORT

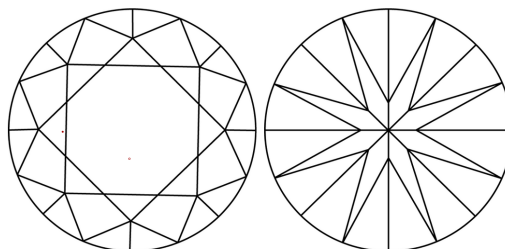
LG760520058
Report verification at igi.org

PROPORTIONS



Sample Image Used

CLARITY CHARACTERISTICS



KEY TO SYMBOLS

Red symbols indicate internal characteristics.
Green symbols indicate external characteristics.

COLOR

D E F G H I J Faint Very Light Light

CLARITY

FL	IF	VVS ¹⁻²	VS ¹⁻²	SI ¹⁻²	I ¹⁻³
Flawless	Internally Flawless	Very Very Slightly Included	Very Slightly Included	Slightly Included	Included

LABORATORY GROWN DIAMOND REPORT



December 23, 2025

IGI Report Number **LG760520058**Description **LABORATORY GROWN DIAMOND**Shape and Cutting Style **ROUND BRILLIANT**

Measurements 9.30 - 9.34 X 5.70 MM

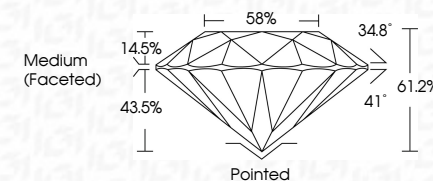
GRADING RESULTS

Carat Weight **3.04 CARATS**

Color Grade E

Clarity Grade VVS 2

Cut Grade **IDEAL**



ADDITIONAL GRADING INFORMATION

Polish EXCELLENT

Symmetry **EXCELLENT**Fluorescence **NONE**Inscription(s) LG760520058

Comments: This Laboratory Grown Diamond was created by Chemical Vapor Deposition (CVD) growth process.
Type IIa



© IGI 2020, International Gemological Institute

FD - 10 20



THIS DOCUMENT WAS PRODUCED WITH THE FOLLOWING SECURITY MEASURES: SPECIAL DOCUMENT PAPER, INK SCREENS, WATERMARK, BACKGROUND DESIGNS, HOLOGRAM, AND OTHER SECURITY FEATURES NOT LISTED AND DO EXCEED DOCUMENT SECURITY INDUSTRY GUIDELINES.

December 23, 2025
 IGI Report No LG760520058
 ROUND BRILLIANT

ROUND BRILLIANT	9.30 - 9.34 X 5.70 MM	3.04 CARATS	VVS 2	IDEAL	61.2%	58%	Medium (Faintest)
	Carat Weight		Clarity Grade	Out Grade	Depth	Table	Grade
	Color Grade						

	Pointed
Culet	EXCELLENT
Polish	EXCELLENT
Symmetry	NONE
Fluorescence	4681 C27656520559

Comments:
This Laboratory Grown Diamond was created by Chemical Vapor Deposition (CVD) growth process.

Comments:
This Laboratory Grown Diamond was
created by Chemical Vapor Deposition
(CVD) growth process.