

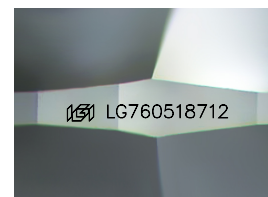
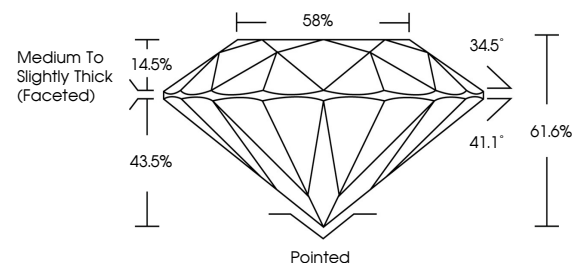


ELECTRONIC COPY

LABORATORY GROWN DIAMOND REPORT

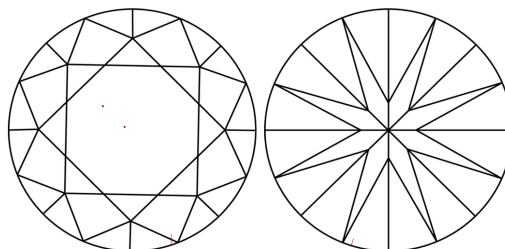
LG760518712
Report verification at igi.org

PROPORTIONS



Sample Image Used

CLARITY CHARACTERISTICS



KEY TO SYMBOLS

Red symbols indicate internal characteristics.
Green symbols indicate external characteristics.

COLOR

D E F G H I J Faint Very Light Light

CLARITY

| FL | IF | VVS ¹⁻² | VS ¹⁻² | SI ¹⁻² | I ¹⁻³ |
|----------|---------------------|-----------------------------|------------------------|-------------------|------------------|
| Flawless | Internally Flawless | Very Very Slightly Included | Very Slightly Included | Slightly Included | Included |

LABORATORY GROWN DIAMOND REPORT



December 25, 2025

IGI Report Number LG760518712

Description **LABORATORY GROWN DIAMOND**Shape and Cutting Style **ROUND BRILLIANT**

Measurements 8.15 - 8.18 X 5.03 MM

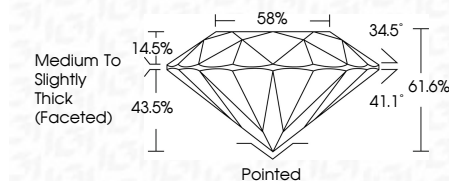
GRADING RESULTS

Carat Weight **2.06 CARATS**

Color Grade **G**

Clarity Grade VS 1

Cut Grade **IDEAL**



ADDITIONAL GRADING INFORMATION

Polish EXCELLENT

Symmetry **EXCELLENT**Fluorescence NONEInscription(s) LG760518712

Comments: This Laboratory Grown Diamond was created by Chemical Vapor Deposition (CVD) growth process.
Type IIa



© IGI 2020, International Gemological Institute

FD - 10 20

www.igi.org

THIS DOCUMENT WAS PRODUCED WITH THE FOLLOWING SECURITY MEASURES: SPECIAL DOCUMENT PAPER, INK SCREENS, WATERMARK, BACKGROUND DESIGNS, HOLOGRAM AND OTHER SECURITY FEATURES NOT LISTED AND DO EXCEED DOCUMENT SECURITY INDUSTRY GUIDELINE

December 25, 2025
IGI Report No LG760518712
ROUND BRILLIANT

| | | | | | | | |
|-----------------|---|-------------|--|------------------------|--|--------------|--|
| ROUND BRILLIANT |  | G | | VS1 | | 2.06 CARATS | |
| | | Color Grade | | Clarity Grade | | Carat Weight | |
| | | Excellent | | Very Slightly Included | | 2.06 | |
| | | I1 | | I2 | | 2.06 | |
| | | I3 | | I4 | | 2.06 | |
| | | I5 | | I6 | | 2.06 | |
| | | I7 | | I8 | | 2.06 | |
| | | I9 | | I10 | | 2.06 | |
| | | I11 | | I12 | | 2.06 | |
| | | I13 | | I14 | | 2.06 | |

Comments:
This Laboratory Grown Diamond was created by Chemical Vapor Deposition (CVD) growth process.