



December 26, 2025

IGI Report Number **LG760514067**

**ROUND CORNERED  
RECTANGULAR MODIFIED  
BRILLIANT**

**LABORATORY GROWN DIAMOND**

**6.92 X 4.25 X 2.50 MM**

Carat Weight	<b>0.69 CARAT</b>
Color Grade	<b>D</b>
Clarity Grade	<b>VS 1</b>
Polish	<b>VERY GOOD</b>
Symmetry	<b>VERY GOOD</b>
Fluorescence	<b>NONE</b>
Inscription(s)	<b>IGI LG760514067</b>

Comments: This Laboratory Grown Diamond was created by Chemical Vapor Deposition (CVD) growth process. Type IIa

**LABORATORY GROWN DIAMOND REPORT**

December 26, 2025

IGI Report Number **LG760514067**

Description **LABORATORY GROWN DIAMOND**

Shape and Cutting Style **ROUND CORNERED RECTANGULAR  
MODIFIED BRILLIANT**

Measurements **6.92 X 4.25 X 2.50 MM**

**GRADING RESULTS**

Carat Weight **0.69 CARAT**

Color Grade **D**

Clarity Grade **VS 1**

**ADDITIONAL GRADING INFORMATION**

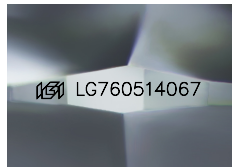
Polish **VERY GOOD**

Symmetry **VERY GOOD**

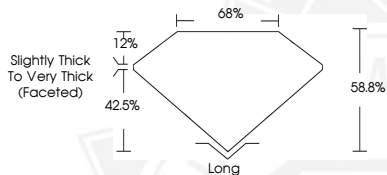
Fluorescence **NONE**

Inscription(s) **IGI LG760514067**

Comments: This Laboratory Grown Diamond was created by Chemical Vapor Deposition (CVD) growth process. Type IIa



Sample Image Used



December 26, 2025

IGI Report Number **LG760514067**

**ROUND CORNERED RECTANGULAR  
MODIFIED BRILLIANT**

**LABORATORY GROWN DIAMOND**

**6.92 X 4.25 X 2.50 MM**

Carat Weight	<b>0.69 CARAT</b>
Color Grade	<b>D</b>
Clarity Grade	<b>VS 1</b>
Polish	<b>VERY GOOD</b>
Symmetry	<b>VERY GOOD</b>
Fluorescence	<b>NONE</b>
Inscription(s)	<b>IGI LG760514067</b>

Comments: This Laboratory Grown Diamond was created by Chemical Vapor Deposition (CVD) growth process. Type IIa



THIS DOCUMENT WAS PRODUCED WITH THE FOLLOWING SECURITY MEASURES: SPECIAL DOCUMENT PAPER, INK SCREENS, WATERMARK, BACKGROUND DESIGNS, HOLOGRAM AND OTHER SECURITY FEATURES NOT LISTED AND DO EXCEED DOCUMENT SECURITY INDUSTRY GUIDELINES.