



ELECTRONIC COPY

LG760513677
Report verification at igi.org



December 23, 2025

IGI Report Number LG760513677

Description LABORATORY GROWN DIAMOND

Shape and Cutting Style CUT CORNERED RECTANGULAR MODIFIED BRILLIANT

Measurements 10.13 X 7.11 X 4.83 MM

GRADING RESULTS

Carat Weight 3.06 CARATS

Color Grade G

Clarity Grade VS 1

December 23, 2025
IGI Report Number LG760513677
Description LABORATORY GROWN DIAMOND
Shape and Cutting Style CUT CORNERED RECTANGULAR MODIFIED BRILLIANT
Measurements 10.13 X 7.11 X 4.83 MM

GRADING RESULTS

Carat Weight 3.06 CARATS

Color Grade G

Clarity Grade VS 1

ADDITIONAL GRADING INFORMATION

Polish EXCELLENT

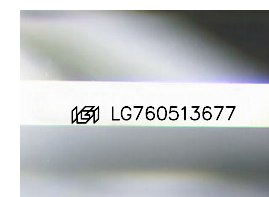
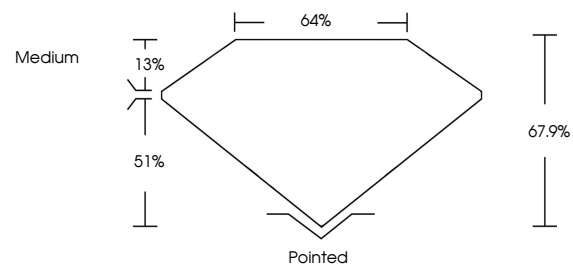
Symmetry EXCELLENT

Fluorescence NONE

Inscription(s) LG760513677

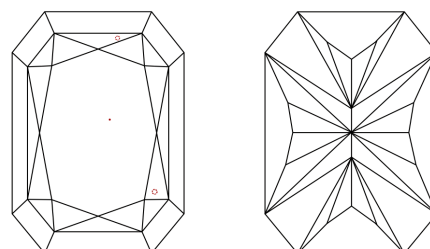
Comments: This Laboratory Grown Diamond was created by Chemical Vapor Deposition (CVD) growth process. Type IIa

PROPORTIONS



Sample Image Used

CLARITY CHARACTERISTICS



KEY TO SYMBOLS

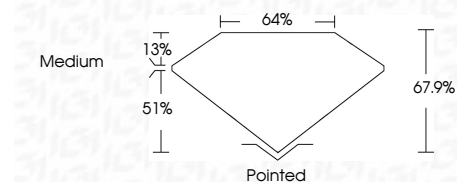
Red symbols indicate internal characteristics. Green symbols indicate external characteristics.

COLOR

D E F G H I J Faint Very Light Light

CLARITY

FL IF VS 1-2 VS 2-2 SI 1-2 I 1-3
Flawless Internally Flawless Very Very Slightly Included Very Slightly Included Slightly Included Included



ADDITIONAL GRADING INFORMATION

Polish EXCELLENT

Symmetry EXCELLENT

Fluorescence NONE

Inscription(s) LG760513677

Comments: This Laboratory Grown Diamond was created by Chemical Vapor Deposition (CVD) growth process. Type IIa



December 23, 2025
IGI Report No. LG760513677
CUT CORNERED RECT. MODIFIED BRILLIANT
10.13 X 7.11 X 4.83 MM
3.06 CARATS
G
VS 1
67.9%
64%
Medium
Pointed
EXCELLENT
EXCELLENT
NONE
LG760513677
Comments: This Laboratory Grown Diamond was created by Chemical Vapor Deposition (CVD) growth process. Type IIa