



ELECTRONIC COPY

LG760510591
Report verification at igi.org



December 25, 2025

IGI Report Number **LG760510591**

Description **LABORATORY GROWN DIAMOND**

Shape and Cutting Style **ROUND BRILLIANT**

Measurements **11.63 - 11.72 X 7.05 MM**

GRADING RESULTS

Carat Weight **6.00 CARATS**

Color Grade **E**

Clarity Grade **VS 1**

Cut Grade **EXCELLENT**

December 25, 2025
IGI Report Number **LG760510591**
Description **LABORATORY GROWN DIAMOND**
Shape and Cutting Style **ROUND BRILLIANT**
Measurements **11.63 - 11.72 X 7.05 MM**

GRADING RESULTS

Carat Weight **6.00 CARATS**

Color Grade **E**

Clarity Grade **VS 1**

Cut Grade **EXCELLENT**

ADDITIONAL GRADING INFORMATION

Polish **EXCELLENT**

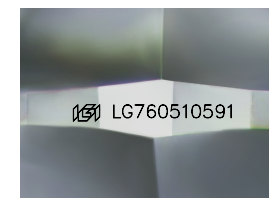
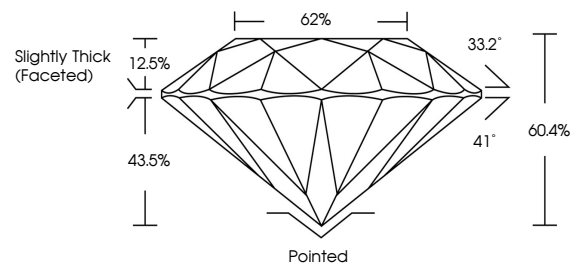
Symmetry **EXCELLENT**

Fluorescence **NONE**

Inscription(s) **IGI LG760510591**

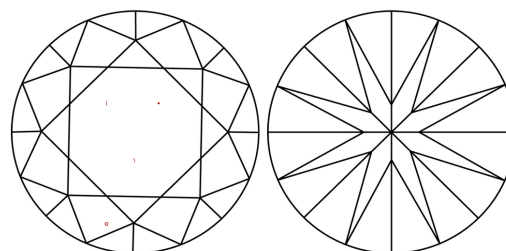
Comments: This Laboratory Grown Diamond was created by Chemical Vapor Deposition (CVD) growth process. Type IIa

PROPORTIONS



Sample Image Used

CLARITY CHARACTERISTICS



KEY TO SYMBOLS

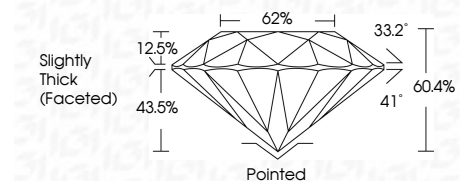
Red symbols indicate internal characteristics.
Green symbols indicate external characteristics.

COLOR

D E F G H I J Faint Very Light Light

CLARITY

FL	IF	VS ¹⁻²	VS ¹⁻²	SI ¹⁻²	I ¹⁻³
Flawless	Internally Flawless	Very Very Slightly Included	Very Slightly Included	Slightly Included	Included



ADDITIONAL GRADING INFORMATION

Polish **EXCELLENT**

Symmetry **EXCELLENT**

Fluorescence **NONE**

Inscription(s) **IGI LG760510591**

Comments: This Laboratory Grown Diamond was created by Chemical Vapor Deposition (CVD) growth process. Type IIa



IGI



December 25, 2025	6.00 CARATS	E	VS 1	EXCELLENT	62%	62%	Slightly Thick (Faceted)	Pointed	EXCELLENT	EXCELLENT	NONE	IGI LG760510591
IGI Report No LG760510591	11.63 - 11.72 X 7.05 MM	Color Grade	Clarity Grade	Cut Grade	Depth	Table	Girdle	Culet	Polish	Symmetry	Fluorescence	Inscription(s)
ROUND BRILLIANT												

Comments: This Laboratory Grown Diamond was created by Chemical Vapor Deposition (CVD) growth process. Type IIa