



ELECTRONIC COPY

LG760510426
Report verification at igi.org



December 30, 2025
IGI Report Number **LG760510426**
Description **LABORATORY GROWN DIAMOND**
Shape and Cutting Style **EMERALD CUT**
Measurements **8.37 X 5.27 X 3.60 MM**
GRADING RESULTS
Carat Weight **1.50 CARAT**
Color Grade **FANCY VIVID GREEN**
Clarity Grade **VS 2**

December 30, 2025
IGI Report Number **LG760510426**
Description **LABORATORY GROWN DIAMOND**
Shape and Cutting Style **EMERALD CUT**
Measurements **8.37 X 5.27 X 3.60 MM**

GRADING RESULTS

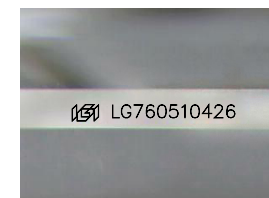
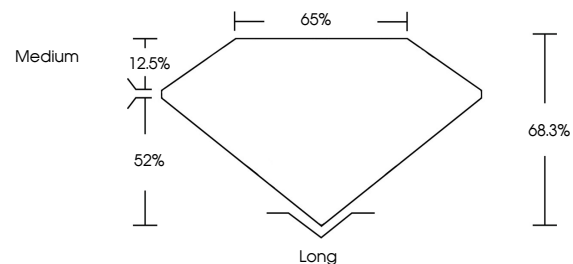
Carat Weight **1.50 CARAT**
Color Grade **FANCY VIVID GREEN**
Clarity Grade **VS 2**

ADDITIONAL GRADING INFORMATION

Polish **EXCELLENT**
Symmetry **EXCELLENT**
Fluorescence **NONE**
Inscription(s) **IGI LG760510426**

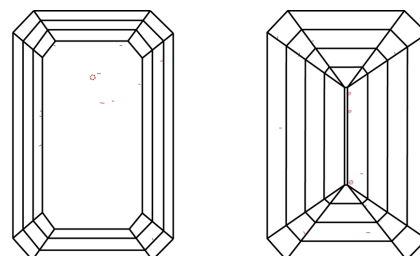
Comments: This Laboratory Grown Diamond was created by Chemical Vapor Deposition (CVD) growth process.
Indications of post-growth treatment.

PROPORTIONS



Sample Image Used

CLARITY CHARACTERISTICS



KEY TO SYMBOLS

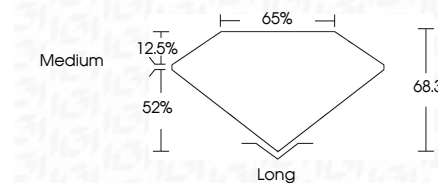
Red symbols indicate internal characteristics.
Green symbols indicate external characteristics.

COLOR

D E F G H I J Faint Very Light Light

CLARITY

FL	IF	VS ¹⁻²	VS ¹⁻²	SI ¹⁻²	I ¹⁻³
Flawless	Internally Flawless	Very Very Slightly Included	Very Slightly Included	Slightly Included	Included



ADDITIONAL GRADING INFORMATION

Polish **EXCELLENT**
Symmetry **EXCELLENT**
Fluorescence **NONE**
Inscription(s) **IGI LG760510426**
Comments: This Laboratory Grown Diamond was created by Chemical Vapor Deposition (CVD) growth process.
Indications of post-growth treatment.



IGI



December 30, 2025
IGI Report No **LG760510426**
EMERALD CUT
1.50 CARAT
8.37 X 5.27 X 3.60 MM
Carat Weight
Color Grade **FANCY VIVID GREEN**
Clarity Grade **VS 2**
Depth **68.3%**
Table **65%**
Girdle **Medium**
Culet **Long**
Polish **EXCELLENT**
Symmetry **EXCELLENT**
Fluorescence **NONE**
Inscription(s) **IGI LG760510426**
Comments: This Laboratory Grown Diamond was created by Chemical Vapor Deposition (CVD) growth process.
Indications of post-growth treatment.