



ELECTRONIC COPY

LG760509846
Report verification at igi.org



December 25, 2025
IGI Report Number LG760509846
Description LABORATORY GROWN DIAMOND
Shape and Cutting Style CUT CORNERED RECTANGULAR MODIFIED BRILLIANT
Measurements 10.02 X 7.31 X 4.85 MM
GRADING RESULTS
Carat Weight 3.03 CARATS
Color Grade F
Clarity Grade VVS 2

December 25, 2025
IGI Report Number LG760509846
Description LABORATORY GROWN DIAMOND
Shape and Cutting Style CUT CORNERED RECTANGULAR MODIFIED BRILLIANT
Measurements 10.02 X 7.31 X 4.85 MM

GRADING RESULTS

Carat Weight 3.03 CARATS
Color Grade F
Clarity Grade VVS 2

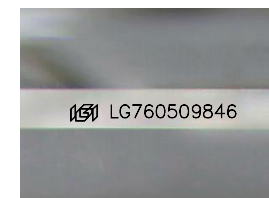
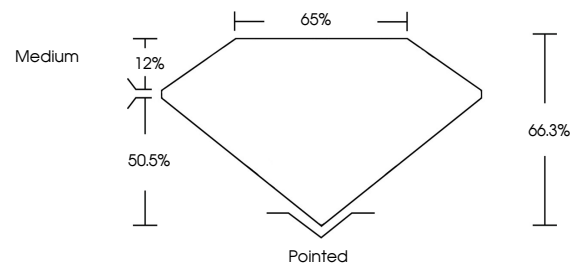
ADDITIONAL GRADING INFORMATION

Polish EXCELLENT
Symmetry EXCELLENT
Fluorescence NONE

Inscription(s) IGI LG760509846

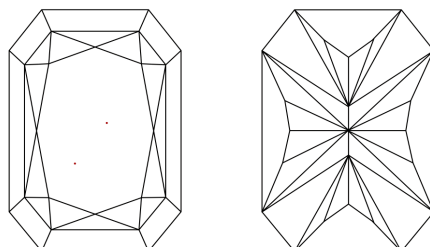
Comments: This Laboratory Grown Diamond was created by Chemical Vapor Deposition (CVD) growth process. Type IIa

PROPORTIONS



Sample Image Used

CLARITY CHARACTERISTICS



KEY TO SYMBOLS

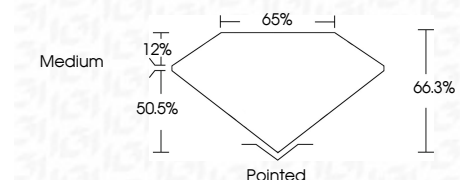
Red symbols indicate internal characteristics.
Green symbols indicate external characteristics.

COLOR

D E F G H I J Faint Very Light Light

CLARITY

FL IF VVS 1-2 VS 1-2 SI 1-2 I 1-3
Flawless Internally Flawless Very Very Slightly Included Very Slightly Included Slightly Included Included



ADDITIONAL GRADING INFORMATION

Polish EXCELLENT
Symmetry EXCELLENT
Fluorescence NONE
Inscription(s) IGI LG760509846
Comments: This Laboratory Grown Diamond was created by Chemical Vapor Deposition (CVD) growth process. Type IIa



December 25, 2025
IGI Report No LG760509846
CUT CORNERED RECT. MODIFIED BRILLIANT
10.02 X 7.31 X 4.85 MM
3.03 CARATS
F
VVS 2
66.3%
50.5%
Medium
Pointed
EXCELLENT
EXCELLENT
NONE
IGI LG760509846
Comments: This Laboratory Grown Diamond was created by Chemical Vapor Deposition (CVD) growth process. Type IIa