

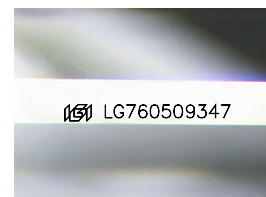
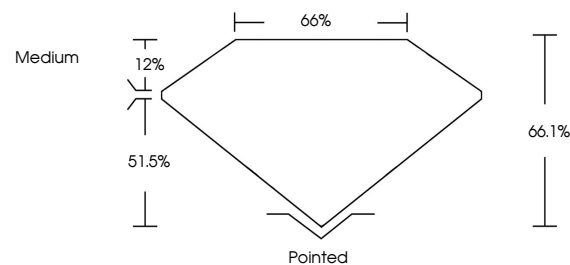


ELECTRONIC COPY

LABORATORY GROWN DIAMOND REPORT

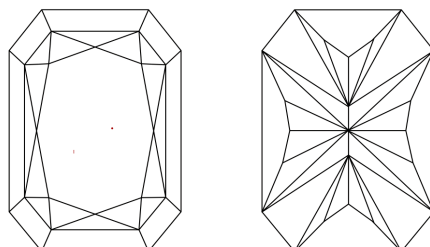
LG760509347
Report verification at igi.org

PROPORTIONS



Sample Image Used

CLARITY CHARACTERISTICS



KEY TO SYMBOLS

Red symbols indicate internal characteristics.
Green symbols indicate external characteristics.

COLOR

D E F G H I J Faint Very Light Light

CLARITY

FL	IF	VVS ¹⁻²	VS ¹⁻²	SI ¹⁻²	I ¹⁻³
Flawless	Internally Flawless	Very Very Slightly Included	Very Slightly Included	Slightly Included	Included

LABORATORY GROWN DIAMOND REPORT



December 26, 2025

IGI Report Number **LG760509347**Description **LABORATORY GROWN DIAMOND**

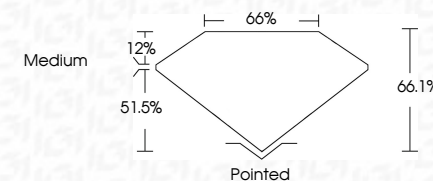
Shape and Cutting Style

Measurements 10.38 X 7.14 X 4.72 MM

GRADING RESULTS

Carat Weight **3.02 CARATS**

Color Grade F

Clarity Grade WS 2

ADDITIONAL GRADING INFORMATION

Polish **EXCELLENT**Symmetry **EXCELLENT**Fluorescence **NONE**Inscription(s) LG760509347

Comments: This Laboratory Grown Diamond was created by Chemical Vapor Deposition (CVD) growth process.
Type IIa



© IGI 2020, International Gemological Institute

FD - 10 20

www.igi.org

THIS DOCUMENT WAS PRODUCED WITH THE FOLLOWING SECURITY MEASURES: SPECIAL DOCUMENT PAPER, INK SCREENS, WATERMARK, BACKGROUND DESIGNS, HOLOGRAM AND OTHER SECURITY FEATURES NOT LISTED AND DO EXCEED DOCUMENT SECURITY INDUSTRY GUIDELINE

December 26, 2025	
Lab Report No. LG746509347	
CU REPORTED RECT. MODIFIED BRILLIANT	
10.38 X 7.14 X 4.72 MM	3.02 CARATS
Carat Weight	F
Color Grade	VVS 2
Clarity Grade	6A.1%
Depth	66%
Table	Medium
Gable	
Culet	Pointed
Polish	EXCELLENT
Symmetry	EXCELLENT
Fluorescence	NONE
Inscriptions(s)	4891 LG746509347
Comments:	
	The Laboratory Grown Diamond was analyzed by the Thermal Vapor Deposition (TVD) growth process. type IIG