



ELECTRONIC COPY

LG760508743 Report verification at igi.org



December 25, 2025

IGI Report Number LG760508743

Description LABORATORY GROWN DIAMOND

Shape and Cutting Style CUT CORNERED RECTANGULAR MODIFIED BRILLIANT

Measurements 10.75 X 7.41 X 5.05 MM

GRADING RESULTS

Carat Weight 3.54 CARATS

Color Grade E

Clarity Grade VS 1

December 25, 2025

IGI Report Number LG760508743

Description LABORATORY GROWN DIAMOND

Shape and Cutting Style CUT CORNERED RECTANGULAR MODIFIED BRILLIANT

Measurements 10.75 X 7.41 X 5.05 MM

GRADING RESULTS

Carat Weight 3.54 CARATS

Color Grade E

Clarity Grade VS 1

ADDITIONAL GRADING INFORMATION

Polish EXCELLENT

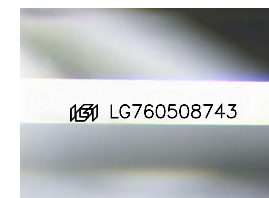
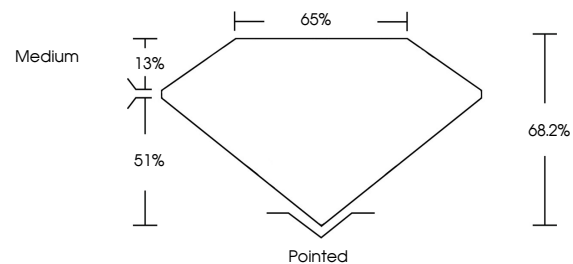
Symmetry EXCELLENT

Fluorescence NONE

Inscription(s) LG760508743

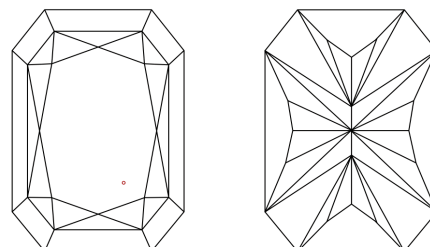
Comments: This Laboratory Grown Diamond was created by Chemical Vapor Deposition (CVD) growth process. Type IIa

PROPORTIONS



Sample Image Used

CLARITY CHARACTERISTICS



KEY TO SYMBOLS

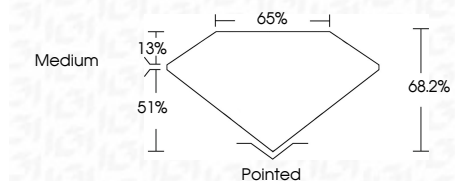
Red symbols indicate internal characteristics. Green symbols indicate external characteristics.

COLOR

D E F G H I J Faint Very Light Light

CLARITY

FL IF VS 1-2 VS 2-2 SI 1-2 I 1-3 Flawless Internally Flawless Very Very Slightly Included Very Slightly Included Slightly Included Included



ADDITIONAL GRADING INFORMATION

Polish EXCELLENT

Symmetry EXCELLENT

Fluorescence NONE

Inscription(s) LG760508743

Comments: This Laboratory Grown Diamond was created by Chemical Vapor Deposition (CVD) growth process. Type IIa



IGI



December 25, 2025 IGI Report No LG760508743 CUT CORNERED RECT. MODIFIED BRILLIANT 10.75 X 7.41 X 5.05 MM 3.54 CARATS E VS 1 68.2% 65% Medium Pointed EXCELLENT EXCELLENT NONE LG760508743 Comments: This Laboratory Grown Diamond was created by Chemical Vapor Deposition (CVD) growth process. Type IIa