



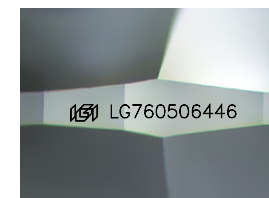
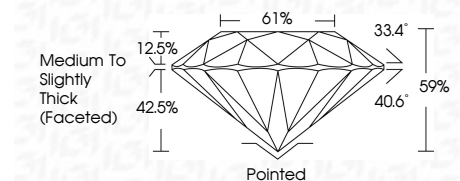
ELECTRONIC COPY

LG760506446
Report verification at igi.org



February 11, 2026
IGI Report Number **LG760506446**
Description **LABORATORY GROWN DIAMOND**
Shape and Cutting Style **ROUND BRILLIANT**
Measurements **8.70 - 8.72 X 5.14 MM**

GRADING RESULTS
Carat Weight **2.40 CARATS**
Color Grade **U-V**
Clarity Grade **VVS 2**
Cut Grade **EXCELLENT**



Sample Image Used

ADDITIONAL GRADING INFORMATION
Polish **EXCELLENT**
Symmetry **EXCELLENT**
Fluorescence **NONE**
Inscription(s) **IGI LG760506446**
Comments: This Laboratory Grown Diamond was created by Chemical Vapor Deposition (CVD) growth process.



February 11, 2026
IGI Report No LG760506446
ROUND BRILLIANT
2.40 CARATS
U-V
VVS 2
EXCELLENT
8.70 - 8.72 X 5.14 MM
Color Grade
U-V
Clarity Grade
VVS 2
Depth
61%
61%
Medium To Slightly Thick (Faceted)
Pointed
EXCELLENT
EXCELLENT
NONE
NONE
IGI LG760506446
Inscription(s)
IGI LG760506446
Comments: This Laboratory Grown Diamond was created by Chemical Vapor Deposition (CVD) growth process.

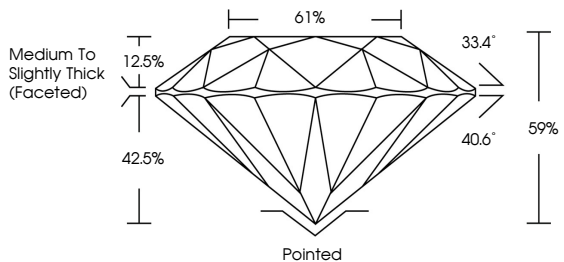
February 11, 2026
IGI Report Number **LG760506446**
Description **LABORATORY GROWN DIAMOND**
Shape and Cutting Style **ROUND BRILLIANT**
Measurements **8.70 - 8.72 X 5.14 MM**

GRADING RESULTS
Carat Weight **2.40 CARATS**
Color Grade **U-V**
Clarity Grade **VVS 2**
Cut Grade **EXCELLENT**

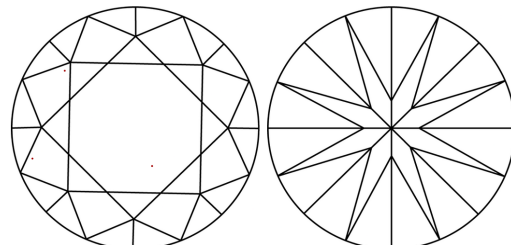
ADDITIONAL GRADING INFORMATION
Polish **EXCELLENT**
Symmetry **EXCELLENT**
Fluorescence **NONE**
Inscription(s) **IGI LG760506446**

Comments: This Laboratory Grown Diamond was created by Chemical Vapor Deposition (CVD) growth process.

PROPORTIONS



CLARITY CHARACTERISTICS



KEY TO SYMBOLS
Red symbols indicate internal characteristics.
Green symbols indicate external characteristics.

COLOR

D	E	F	G	H	I	J	Faint	Very Light	Light
---	---	---	---	---	---	---	-------	------------	-------

CLARITY

FL	IF	VVS ¹⁻²	VS ¹⁻²	SI ¹⁻²	I ¹⁻³
Flawless	Internally Flawless	Very Very Slightly Included	Very Slightly Included	Slightly Included	Included

