



**ELECTRONIC COPY**

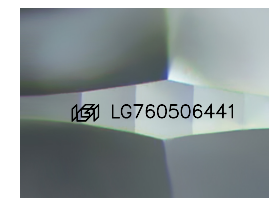
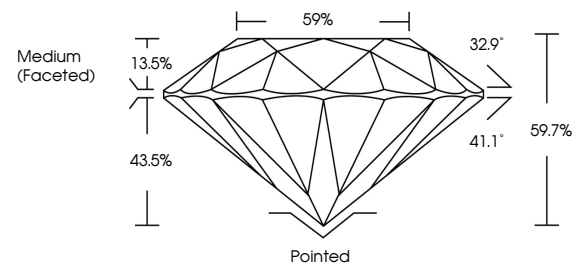
LG760506441  
Report verification at igi.org



February 10, 2026  
IGI Report Number **LG760506441**  
Description **LABORATORY GROWN DIAMOND**  
Shape and Cutting Style **ROUND BRILLIANT**  
Measurements **6.53 - 6.55 X 3.90 MM**  
**GRADING RESULTS**  
Carat Weight **1.01 CARAT**  
Color Grade **FANCY LIGHT YELLOW**  
Clarity Grade **SI 2**  
Cut Grade **IDEAL**

February 10, 2026  
IGI Report Number **LG760506441**  
Description **LABORATORY GROWN DIAMOND**  
Shape and Cutting Style **ROUND BRILLIANT**  
Measurements **6.53 - 6.55 X 3.90 MM**

**PROPORTIONS**

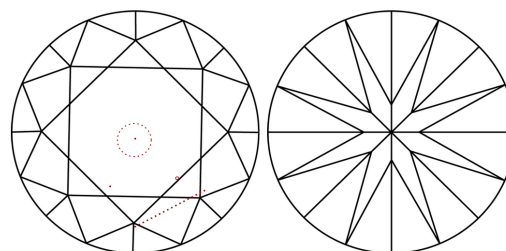


Sample Image Used

**GRADING RESULTS**

Carat Weight **1.01 CARAT**  
Color Grade **FANCY LIGHT YELLOW**  
Clarity Grade **SI 2**  
Cut Grade **IDEAL**

**CLARITY CHARACTERISTICS**



**KEY TO SYMBOLS**

Red symbols indicate internal characteristics.  
Green symbols indicate external characteristics.

**ADDITIONAL GRADING INFORMATION**

Polish **EXCELLENT**  
Symmetry **EXCELLENT**  
Fluorescence **NONE**  
Inscription(s) **IGI LG760506441**

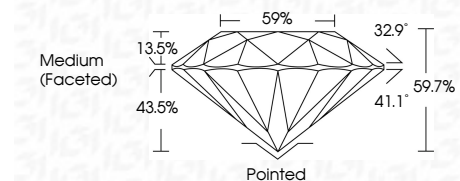
Comments: This Laboratory Grown Diamond was created by Chemical Vapor Deposition (CVD) growth process.

**COLOR**

D E F G H I J Faint Very Light Light

**CLARITY**

FL	IF	VS <sup>1-2</sup>	VS <sup>1-2</sup>	SI <sup>1-2</sup>	I <sup>1-3</sup>
Flawless	Internally Flawless	Very Very Slightly Included	Very Slightly Included	Slightly Included	Included



**ADDITIONAL GRADING INFORMATION**

Polish **EXCELLENT**  
Symmetry **EXCELLENT**  
Fluorescence **NONE**  
Inscription(s) **IGI LG760506441**  
Comments: This Laboratory Grown Diamond was created by Chemical Vapor Deposition (CVD) growth process.



February 10, 2026  
IGI Report No LG760506441  
**ROUND BRILLIANT**  
6.53 - 6.55 X 3.90 MM  
1.01 CARAT  
FANCY LIGHT YELLOW  
SI 2  
IDEAL  
59.7%  
59%  
Medium (Faceted)  
Pointed  
EXCELLENT  
EXCELLENT  
NONE  
IGI LG760506441  
Comments: This Laboratory Grown Diamond was created by Chemical Vapor Deposition (CVD) growth process.