



ELECTRONIC COPY

LG760506385
Report verification at igi.org



February 9, 2026
IGI Report Number **LG760506385**
Description **LABORATORY GROWN DIAMOND**
Shape and Cutting Style **CUSHION MODIFIED BRILLIANT**
Measurements **10.29 X 7.85 X 5.44 MM**
GRADING RESULTS
Carat Weight **4.02 CARATS**
Color Grade **FANCY INTENSE YELLOW**
Clarity Grade **VS 2**

February 9, 2026
IGI Report Number **LG760506385**
Description **LABORATORY GROWN DIAMOND**
Shape and Cutting Style **CUSHION MODIFIED BRILLIANT**
Measurements **10.29 X 7.85 X 5.44 MM**

GRADING RESULTS

Carat Weight **4.02 CARATS**
Color Grade **FANCY INTENSE YELLOW**
Clarity Grade **VS 2**

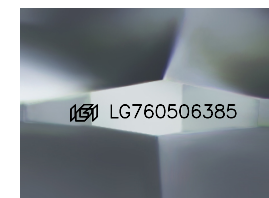
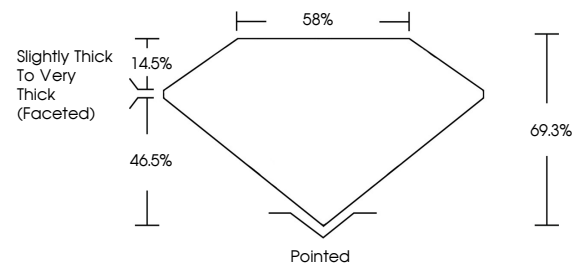
ADDITIONAL GRADING INFORMATION

Polish **EXCELLENT**
Symmetry **EXCELLENT**
Fluorescence **NONE**
Inscription(s) **LG760506385**

Comments: This Laboratory Grown Diamond was created by Chemical Vapor Deposition (CVD) growth process.

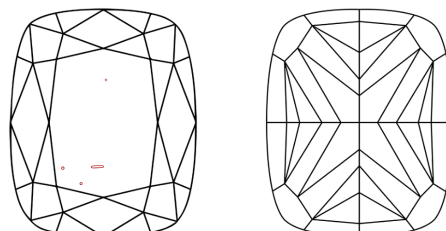
Secondary color: Gray

PROPORTIONS



Sample Image Used

CLARITY CHARACTERISTICS



KEY TO SYMBOLS

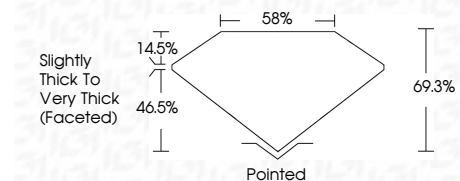
Red symbols indicate internal characteristics.
Green symbols indicate external characteristics.

COLOR

D E F G H I J Faint Very Light Light

CLARITY

FL	IF	VS ¹⁻²	VS ¹⁻²	SI ¹⁻²	I ¹⁻³
Flawless	Internally Flawless	Very Very Slightly Included	Very Slightly Included	Slightly Included	Included



ADDITIONAL GRADING INFORMATION

Polish **EXCELLENT**
Symmetry **EXCELLENT**
Fluorescence **NONE**
Inscription(s) **LG760506385**
Comments: This Laboratory Grown Diamond was created by Chemical Vapor Deposition (CVD) growth process.
Secondary color: Gray



February 9, 2026
IGI Report No **LG760506385**
CUSHION MODIFIED BRILLIANT
4.02 CARATS
Carat Weight **FANCY INTENSE YELLOW**
Color Grade **VS 2**
Depth **69.3%**
Table **14.5%**
Girdle **Slightly Thick To Very Thick (Faceted)**
Culet **Pointed**
Polish **EXCELLENT**
Symmetry **EXCELLENT**
Fluorescence **NONE**
Inscription(s) **LG760506385**
Comments: This Laboratory Grown Diamond was created by Chemical Vapor Deposition (CVD) growth process.
Secondary color: Gray