



ELECTRONIC COPY

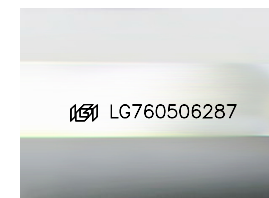
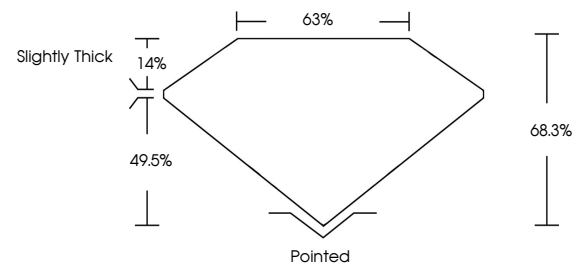
LG760506287
Report verification at igi.org



February 6, 2026
IGI Report Number **LG760506287**
Description **LABORATORY GROWN DIAMOND**
Shape and Cutting Style **PRINCESS CUT**
Measurements **5.75 X 5.49 X 3.75 MM**
GRADING RESULTS
Carat Weight **1.09 CARAT**
Color Grade **FANCY VIVID PINK**
Clarity Grade **VVS 2**

February 6, 2026
IGI Report Number **LG760506287**
Description **LABORATORY GROWN DIAMOND**
Shape and Cutting Style **PRINCESS CUT**
Measurements **5.75 X 5.49 X 3.75 MM**

PROPORTIONS

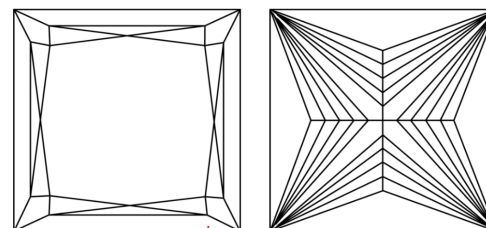


Sample Image Used

GRADING RESULTS

Carat Weight **1.09 CARAT**
Color Grade **FANCY VIVID PINK**
Clarity Grade **VVS 2**

CLARITY CHARACTERISTICS



KEY TO SYMBOLS

Red symbols indicate internal characteristics.
Green symbols indicate external characteristics.

ADDITIONAL GRADING INFORMATION

Polish **EXCELLENT**
Symmetry **EXCELLENT**
Fluorescence **SLIGHT**
Inscription(s) **IGI LG760506287**

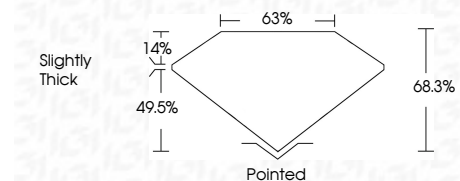
Comments: This Laboratory Grown Diamond was created by Chemical Vapor Deposition (CVD) growth process.
Indications of post-growth treatment.

COLOR

D E F G H I J Faint Very Light Light

CLARITY

FL	IF	VVS ¹⁻²	VS ¹⁻²	SI ¹⁻²	I ¹⁻³
Flawless	Internally Flawless	Very Very Slightly Included	Very Slightly Included	Slightly Included	Included



ADDITIONAL GRADING INFORMATION

Polish **EXCELLENT**
Symmetry **EXCELLENT**
Fluorescence **SLIGHT**
Inscription(s) **IGI LG760506287**
Comments: This Laboratory Grown Diamond was created by Chemical Vapor Deposition (CVD) growth process.
Indications of post-growth treatment.



February 6, 2026
IGI Report No. **LG760506287**
PRINCESS CUT
1.09 CARAT
Carat Weight **FANCY VIVID PINK**
Color Grade **VVS 2**
Depth **68.3%**
Table **63%**
Girdle **Slightly Thick**
Culet **Pointed**
Polish **EXCELLENT**
Symmetry **EXCELLENT**
Fluorescence **SLIGHT**
Inscription(s) **IGI LG760506287**
Comments: This Laboratory Grown Diamond was created by Chemical Vapor Deposition (CVD) growth process.
Indications of post-growth treatment.