



**ELECTRONIC COPY**

LG760506107  
Report verification at igi.org



February 11, 2026

IGI Report Number **LG760506107**

Description **LABORATORY GROWN DIAMOND**

Shape and Cutting Style **ROUND BRILLIANT**

Measurements **6.94 - 6.98 X 4.31 MM**

**GRADING RESULTS**

Carat Weight **1.30 CARAT**

Color Grade **Q-R**

Clarity Grade **VS 1**

Cut Grade **IDEAL**

February 11, 2026  
IGI Report Number **LG760506107**  
Description **LABORATORY GROWN DIAMOND**  
Shape and Cutting Style **ROUND BRILLIANT**  
Measurements **6.94 - 6.98 X 4.31 MM**

**GRADING RESULTS**

Carat Weight **1.30 CARAT**

Color Grade **Q-R**

Clarity Grade **VS 1**

Cut Grade **IDEAL**

**ADDITIONAL GRADING INFORMATION**

Polish **EXCELLENT**

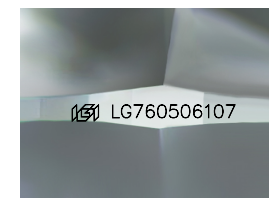
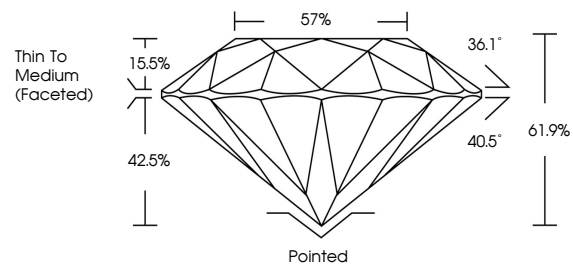
Symmetry **EXCELLENT**

Fluorescence **NONE**

Inscription(s) **IGI LG760506107**

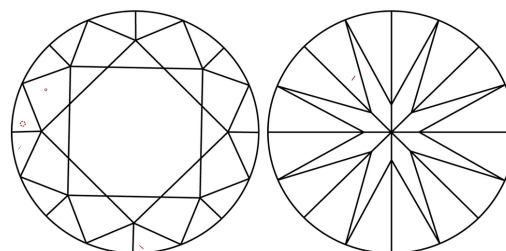
Comments: This Laboratory Grown Diamond was created by Chemical Vapor Deposition (CVD) growth process.  
Type IIa  
Light Yellow

**PROPORTIONS**



Sample Image Used

**CLARITY CHARACTERISTICS**



**KEY TO SYMBOLS**

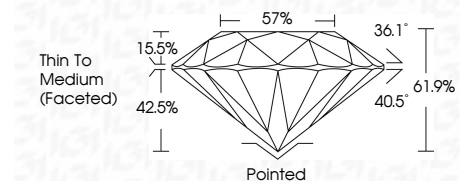
Red symbols indicate internal characteristics.  
Green symbols indicate external characteristics.

**COLOR**

D E F G H I J Faint Very Light Light

**CLARITY**

| FL       | IF                  | VS <sup>1-2</sup>           | VS <sup>1-2</sup>      | SI <sup>1-2</sup> | I <sup>1-3</sup> |
|----------|---------------------|-----------------------------|------------------------|-------------------|------------------|
| Flawless | Internally Flawless | Very Very Slightly Included | Very Slightly Included | Slightly Included | Included         |



**ADDITIONAL GRADING INFORMATION**

Polish **EXCELLENT**

Symmetry **EXCELLENT**

Fluorescence **NONE**

Inscription(s) **IGI LG760506107**

Comments: This Laboratory Grown Diamond was created by Chemical Vapor Deposition (CVD) growth process.  
Type IIa  
Light Yellow



**IGI**



|                   |                           |              |             |               |           |       |       |                          |         |           |           |              |                 |
|-------------------|---------------------------|--------------|-------------|---------------|-----------|-------|-------|--------------------------|---------|-----------|-----------|--------------|-----------------|
| February 11, 2026 | IGI Report No LG760506107 | 1.30 CARAT   | Q-R         | VS 1          | IDEAL     | 57%   | 61.9% | Thin To Medium (Faceted) | Pointed | EXCELLENT | EXCELLENT | NONE         | IGI LG760506107 |
| ROUND BRILLIANT   | 6.94 - 6.98 X 4.31 MM     | Carat Weight | Color Grade | Clarity Grade | Cut Grade | Depth | Table | Girdle                   | Culet   | Polish    | Symmetry  | Fluorescence | Inscription(s)  |

Comments: This Laboratory Grown Diamond was created by Chemical Vapor Deposition (CVD) growth process.  
Type IIa  
Light Yellow