



ELECTRONIC COPY

LG760505803
Report verification at igi.org



January 26, 2026
IGI Report Number **LG760505803**
Description **LABORATORY GROWN DIAMOND**
Shape and Cutting Style **CUSHION MODIFIED BRILLIANT**
Measurements **7.73 X 5.71 X 3.97 MM**
GRADING RESULTS
Carat Weight **1.55 CARAT**
Color Grade **FANCY INTENSE YELLOW**
Clarity Grade **VS 2**

January 26, 2026
IGI Report Number **LG760505803**
Description **LABORATORY GROWN DIAMOND**
Shape and Cutting Style **CUSHION MODIFIED BRILLIANT**
Measurements **7.73 X 5.71 X 3.97 MM**

GRADING RESULTS

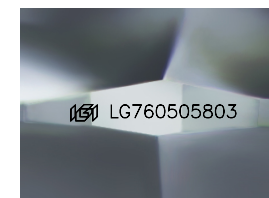
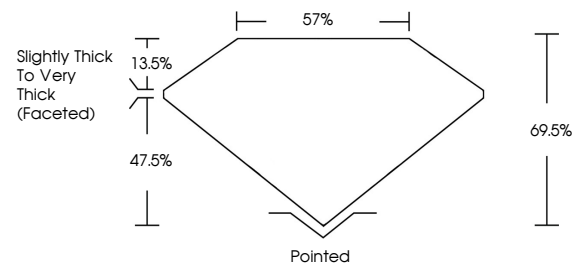
Carat Weight **1.55 CARAT**
Color Grade **FANCY INTENSE YELLOW**
Clarity Grade **VS 2**

ADDITIONAL GRADING INFORMATION

Polish **EXCELLENT**
Symmetry **EXCELLENT**
Fluorescence **NONE**
Inscription(s) **LG760505803**

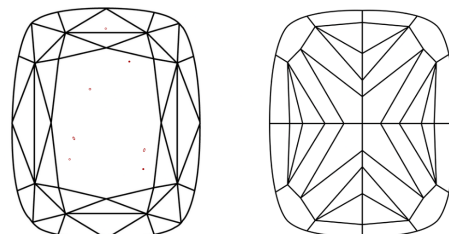
Comments: This Laboratory Grown Diamond was created by Chemical Vapor Deposition (CVD) growth process.

PROPORTIONS



Sample Image Used

CLARITY CHARACTERISTICS



KEY TO SYMBOLS

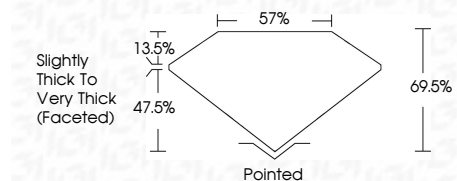
Red symbols indicate internal characteristics.
Green symbols indicate external characteristics.

COLOR

D E F G H I J Faint Very Light Light

CLARITY

| FL | IF | VS ¹⁻² | VS ¹⁻² | SI ¹⁻² | I ¹⁻³ |
|----------|---------------------|-----------------------------|------------------------|-------------------|------------------|
| Flawless | Internally Flawless | Very Very Slightly Included | Very Slightly Included | Slightly Included | Included |



ADDITIONAL GRADING INFORMATION

Polish **EXCELLENT**
Symmetry **EXCELLENT**
Fluorescence **NONE**
Inscription(s) **LG760505803**
Comments: This Laboratory Grown Diamond was created by Chemical Vapor Deposition (CVD) growth process.



January 26, 2026
IGI Report No **LG760505803**
CUSHION MODIFIED BRILLIANT
Carat Weight **1.55 CARAT**
Color Grade **FANCY INTENSE YELLOW**
Clarity Grade **VS 2**
Depth **69.5%**
Table **57%**
Girdle **Slightly Thick To Very Thick (Faceted)**
Culet **Pointed**
Polish **EXCELLENT**
Symmetry **EXCELLENT**
Fluorescence **NONE**
Inscription(s) **LG760505803**
Comments: This Laboratory Grown Diamond was created by Chemical Vapor Deposition (CVD) growth process.