



ELECTRONIC COPY

LG760505739
Report verification at igi.org



January 23, 2026

IGI Report Number **LG760505739**

Description **LABORATORY GROWN DIAMOND**

Shape and Cutting Style **EMERALD CUT**

Measurements **8.67 X 5.91 X 3.88 MM**

GRADING RESULTS

Carat Weight **2.00 CARATS**

Color Grade **FANCY VIVID BLUE**

Clarity Grade **VS 2**

January 23, 2026
IGI Report Number **LG760505739**
Description **LABORATORY GROWN DIAMOND**
Shape and Cutting Style **EMERALD CUT**
Measurements **8.67 X 5.91 X 3.88 MM**

GRADING RESULTS

Carat Weight **2.00 CARATS**

Color Grade **FANCY VIVID BLUE**

Clarity Grade **VS 2**

ADDITIONAL GRADING INFORMATION

Polish **VERY GOOD**

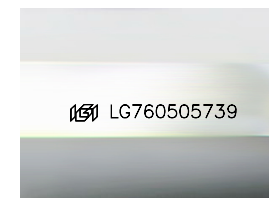
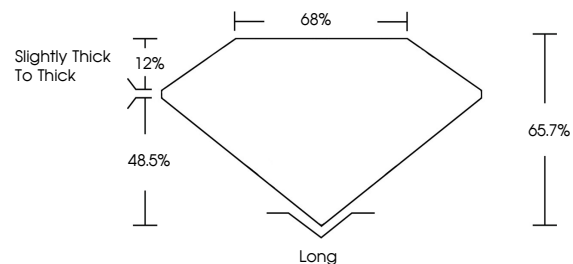
Symmetry **EXCELLENT**

Fluorescence **NONE**

Inscription(s) **IGI LG760505739**

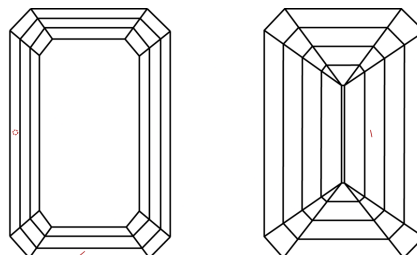
Comments: This Laboratory Grown Diamond was created by Chemical Vapor Deposition (CVD) growth process. Indications of post-growth treatment.

PROPORTIONS



Sample Image Used

CLARITY CHARACTERISTICS



KEY TO SYMBOLS

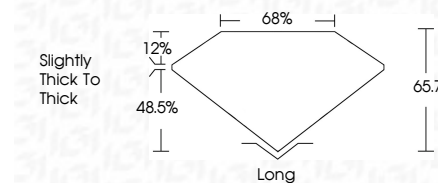
Red symbols indicate internal characteristics.
Green symbols indicate external characteristics.

COLOR

D E F G H I J Faint Very Light Light

CLARITY

FL	IF	VS ¹⁻²	VS ¹⁻²	SI ¹⁻²	I ¹⁻³
Flawless	Internally Flawless	Very Very Slightly Included	Very Slightly Included	Slightly Included	Included



ADDITIONAL GRADING INFORMATION

Polish **VERY GOOD**

Symmetry **EXCELLENT**

Fluorescence **NONE**

Inscription(s) **IGI LG760505739**

Comments: This Laboratory Grown Diamond was created by Chemical Vapor Deposition (CVD) growth process. Indications of post-growth treatment.



IGI



January 23, 2026
IGI Report No. **LG760505739**
EMERALD CUT
2.00 CARATS
Carat Weight
Color Grade **FANCY VIVID BLUE**
Clarity Grade **VS 2**
Depth **65.7%**
Table **68%**
Girdle **Slightly thick to thick**
Culet **Long**
Polish **VERY GOOD**
Symmetry **EXCELLENT**
Fluorescence **NONE**
Inscription(s) **IGI LG760505739**
Comments: This Laboratory Grown Diamond was created by Chemical Vapor Deposition (CVD) growth process. Indications of post-growth treatment.