



ELECTRONIC COPY

LG760505650
Report verification at igi.org



January 22, 2026
IGI Report Number **LG760505650**
Description **LABORATORY GROWN DIAMOND**
Shape and Cutting Style **CUT CORNERED
RECTANGULAR MODIFIED
BRILLIANT**
Measurements **10.46 X 7.35 X 5.19 MM**
GRADING RESULTS
Carat Weight **3.83 CARATS**
Color Grade **FANCY INTENSE YELLOW**
Clarity Grade **VS 2**

LABORATORY GROWN DIAMOND REPORT

January 22, 2026
IGI Report Number **LG760505650**
Description **LABORATORY GROWN DIAMOND**
Shape and Cutting Style **CUT CORNERED RECTANGULAR
MODIFIED BRILLIANT**
Measurements **10.46 X 7.35 X 5.19 MM**

GRADING RESULTS

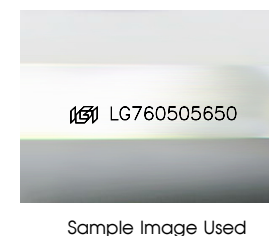
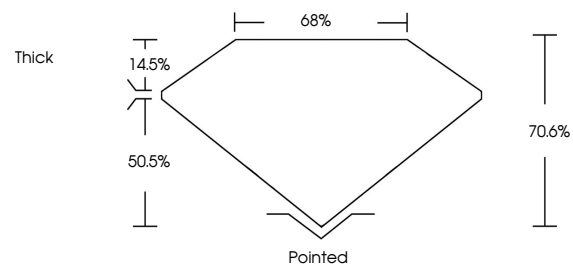
Carat Weight **3.83 CARATS**
Color Grade **FANCY INTENSE YELLOW**
Clarity Grade **VS 2**

ADDITIONAL GRADING INFORMATION

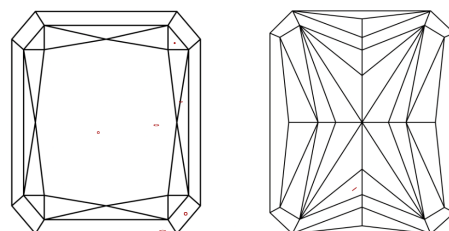
Polish **EXCELLENT**
Symmetry **EXCELLENT**
Fluorescence **NONE**
Inscription(s) **IGI LG760505650**

Comments: This Laboratory Grown Diamond was created by Chemical Vapor Deposition (CVD) growth process.

PROPORTIONS



CLARITY CHARACTERISTICS



KEY TO SYMBOLS

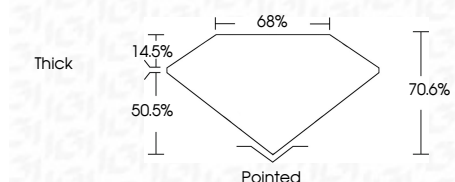
Red symbols indicate internal characteristics.
Green symbols indicate external characteristics.

COLOR

D E F G H I J Faint Very Light Light

CLARITY

FL	IF	VS ¹⁻²	VS ¹⁻²	SI ¹⁻²	I ¹⁻³
Flawless	Internally Flawless	Very Very Slightly Included	Very Slightly Included	Slightly Included	Included



ADDITIONAL GRADING INFORMATION

Polish **EXCELLENT**
Symmetry **EXCELLENT**
Fluorescence **NONE**
Inscription(s) **IGI LG760505650**
Comments: This Laboratory Grown Diamond was created by Chemical Vapor Deposition (CVD) growth process.



January 22, 2026
IGI Report No **LG760505650**
CUT CORNERED RECT. MODIFIED BRILLIANT
10.46 X 7.35 X 5.19 MM
3.83 CARATS
FANCY INTENSE YELLOW
VS 2
70.6%
68%
Thick
Pointed
EXCELLENT
EXCELLENT
NONE
IGI LG760505650
Comments: This Laboratory Grown Diamond was created by Chemical Vapor Deposition (CVD) growth process.