



ELECTRONIC COPY

LG760503322
Report verification at igi.org



December 30, 2025
IGI Report Number **LG760503322**
Description **LABORATORY GROWN DIAMOND**
Shape and Cutting Style **SQUARE CUSHION MODIFIED BRILLIANT**
Measurements **5.64 X 5.51 X 3.64 MM**
GRADING RESULTS
Carat Weight **1.04 CARAT**
Color Grade **FANCY LIGHT YELLOW**
Clarity Grade **VVS 2**

December 30, 2025
IGI Report Number **LG760503322**
Description **LABORATORY GROWN DIAMOND**
Shape and Cutting Style **SQUARE CUSHION MODIFIED BRILLIANT**
Measurements **5.64 X 5.51 X 3.64 MM**

GRADING RESULTS

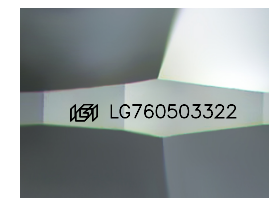
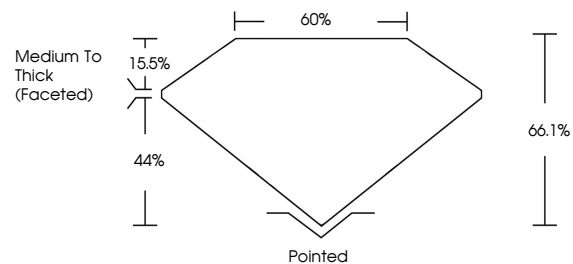
Carat Weight **1.04 CARAT**
Color Grade **FANCY LIGHT YELLOW**
Clarity Grade **VVS 2**

ADDITIONAL GRADING INFORMATION

Polish **EXCELLENT**
Symmetry **EXCELLENT**
Fluorescence **NONE**
Inscription(s) **IGI LG760503322**

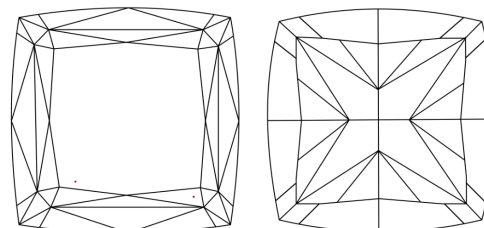
Comments: This Laboratory Grown Diamond was created by Chemical Vapor Deposition (CVD) growth process.

PROPORTIONS



Sample Image Used

CLARITY CHARACTERISTICS



KEY TO SYMBOLS

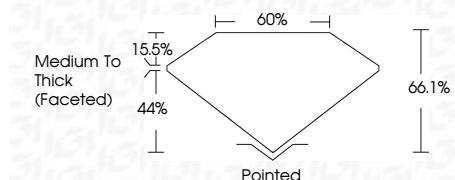
Red symbols indicate internal characteristics.
Green symbols indicate external characteristics.

COLOR

D E F G H I J Faint Very Light Light

CLARITY

FL	IF	VVS ¹⁻²	VS ¹⁻²	SI ¹⁻²	I ¹⁻³
Flawless	Internally Flawless	Very Very Slightly Included	Very Slightly Included	Slightly Included	Included



ADDITIONAL GRADING INFORMATION

Polish **EXCELLENT**
Symmetry **EXCELLENT**
Fluorescence **NONE**
Inscription(s) **IGI LG760503322**
Comments: This Laboratory Grown Diamond was created by Chemical Vapor Deposition (CVD) growth process.



December 30, 2025
IGI Report No **LG760503322**
SQUARE CUSHION MODIFIED BRILLIANT
Carat Weight **1.04 CARAT**
Color Grade **FANCY LIGHT YELLOW**
Clarity Grade **VVS 2**
Depth **66.1%**
Table **60%**
Girdle **Medium To Thick (Faceted)**
Culet **Pointed**
Polish **EXCELLENT**
Symmetry **EXCELLENT**
Fluorescence **NONE**
Inscription(s) **IGI LG760503322**
Comments: This Laboratory Grown Diamond was created by Chemical Vapor Deposition (CVD) growth process.