

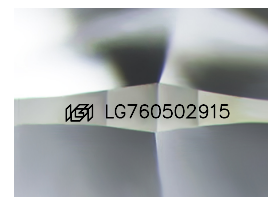
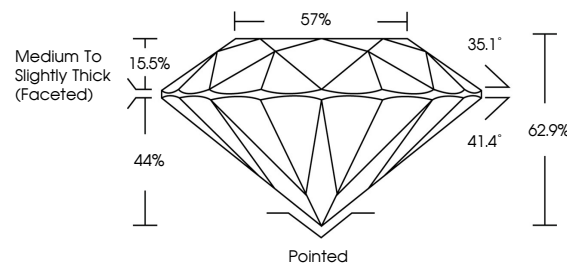


**ELECTRONIC COPY**

## LABORATORY GROWN DIAMOND REPORT

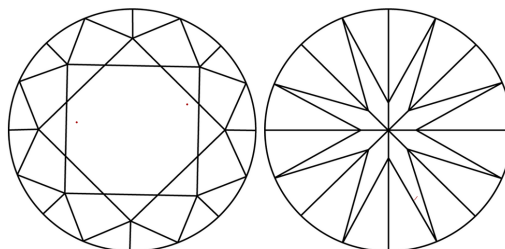
LG760502915  
Report verification at [igi.org](https://igi.org)

## PROPORTIONS



Sample Image Used

## CLARITY CHARACTERISTICS



### KEY TO SYMBOLS

Red symbols indicate internal characteristics.  
Green symbols indicate external characteristics.

## COLOR

D E F G H I J Faint Very Light Light

## CLARITY

FL	IF	VVS <sup>1-2</sup>	VS <sup>1-2</sup>	SI <sup>1-2</sup>	I <sup>1-3</sup>
Flawless	Internally Flawless	Very Very Slightly Included	Very Slightly Included	Slightly Included	Included

## LABORATORY GROWN DIAMOND REPORT



December 29, 2025

IGI Report Number **LG760502915**Description **LABORATORY GROWN DIAMOND**Shape and Cutting Style **ROUND BRILLIANT**

Measurements 8.09 - 8.12 X 5.10 MM

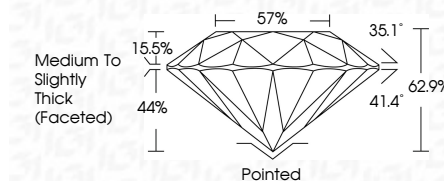
## GRADING RESULTS

Carat Weight **2.06 CARATS**

Color Grade	E
-------------	---

Clarity Grade VVS 2

Cut Grade **EXCELLENT**



### ADDITIONAL GRADING INFORMATION

Polish **EXCELLENT**Symmetry **EXCELLENT**Fluorescence **NONE**Inscription(s)  LG760502915

Comments: This Laboratory Grown Diamond was created by Chemical Vapor Deposition (CVD) growth process.  
Type IIa



© IGI 2020, International Gemological Institute

FD - 10 20

**www.igi.org**

THIS DOCUMENT WAS PRODUCED WITH THE FOLLOWING SECURITY MEASURES: SPECIAL DOCUMENT PAPER, INK SCREENS, WATERMARK, BACKGROUND DESIGNS, HOLOGRAM AND OTHER SECURITY FEATURES NOT LISTED AND DO EXCEED DOCUMENT SECURITY INDUSTRY GUIDELINE

December 29, 2025  
 IGI Report No LG760502915  
 ROUND BRILLIANT

Color	8.12 X 5.10 MM	2.06 CARATS
Carat Weight		
Color Grade		
Clarity Grade		VVS 2
Cut Grade		EXCELLENT
Depth		62.9%
Table		57%
Girdle		Medium to Slightly Thick (Faceted)
Culet		Pointed
Polish		EXCELLENT
Symmetry		EXCELLENT
Fluorescence		NONE

**Comments:**  
This Laboratory Grown Diamond was created by Chemical Vapor Deposition (CVD) growth process.