



ELECTRONIC COPY

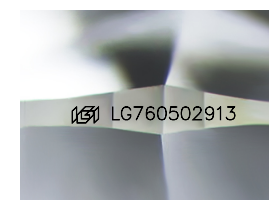
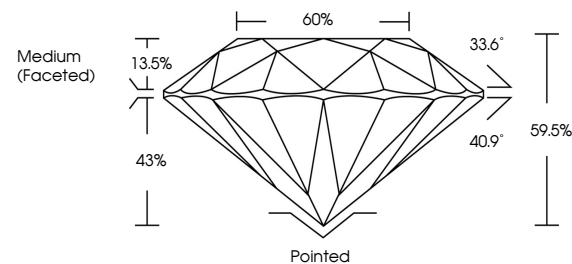
LG760502913
Report verification at igi.org



December 29, 2025
IGI Report Number **LG760502913**
Description **LABORATORY GROWN DIAMOND**
Shape and Cutting Style **ROUND BRILLIANT**
Measurements **8.62 - 8.65 X 5.14 MM**
GRADING RESULTS
Carat Weight **2.33 CARATS**
Color Grade **D**
Clarity Grade **VS 2**
Cut Grade **IDEAL**

December 29, 2025
IGI Report Number **LG760502913**
Description **LABORATORY GROWN DIAMOND**
Shape and Cutting Style **ROUND BRILLIANT**
Measurements **8.62 - 8.65 X 5.14 MM**

PROPORTIONS

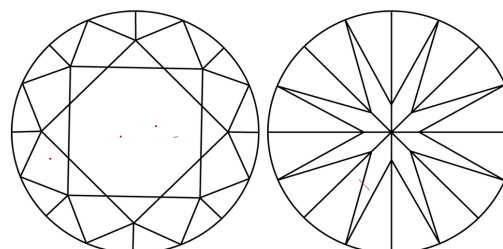


Sample Image Used

GRADING RESULTS

Carat Weight **2.33 CARATS**
Color Grade **D**
Clarity Grade **VS 2**
Cut Grade **IDEAL**

CLARITY CHARACTERISTICS



KEY TO SYMBOLS

Red symbols indicate internal characteristics.
Green symbols indicate external characteristics.

ADDITIONAL GRADING INFORMATION

Polish **EXCELLENT**
Symmetry **EXCELLENT**
Fluorescence **NONE**
Inscription(s) **IGI LG760502913**

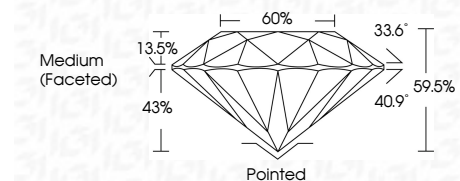
Comments: This Laboratory Grown Diamond was created by Chemical Vapor Deposition (CVD) growth process.
Type IIa

COLOR

D E F G H I J Faint Very Light Light

CLARITY

FL	IF	VS ¹⁻²	VS ¹⁻²	SI ¹⁻²	I ¹⁻³
Flawless	Internally Flawless	Very Very Slightly Included	Very Slightly Included	Slightly Included	Included



ADDITIONAL GRADING INFORMATION

Polish **EXCELLENT**
Symmetry **EXCELLENT**
Fluorescence **NONE**
Inscription(s) **IGI LG760502913**
Comments: This Laboratory Grown Diamond was created by Chemical Vapor Deposition (CVD) growth process.
Type IIa



IGI



December 29, 2025
IGI Report No **LG760502913**
ROUND BRILLIANT
8.62 - 8.65 X 5.14 MM
Carat Weight **2.33 CARATS**
Color Grade **D**
Clarity Grade **VS 2**
Cut Grade **IDEAL**
Depth **59.5%**
Table **60%**
Girdle **Medium (Faceted)**
Culet **Pointed**
Polish **EXCELLENT**
Symmetry **EXCELLENT**
Fluorescence **NONE**
Inscription(s) **IGI LG760502913**
Comments: This Laboratory Grown Diamond was created by Chemical Vapor Deposition (CVD) growth process.
Type IIa