



ELECTRONIC COPY

LG760502097
Report verification at igi.org



January 17, 2026

IGI Report Number **LG760502097**

Description **LABORATORY GROWN DIAMOND**

Shape and Cutting Style **ROUND BRILLIANT**

Measurements **10.83 - 10.86 X 6.59 MM**

GRADING RESULTS

Carat Weight **4.79 CARATS**

Color Grade **FANCY INTENSE GREEN**

Clarity Grade **VS 2**

Cut Grade **EXCELLENT**

January 17, 2026
IGI Report Number **LG760502097**
Description **LABORATORY GROWN DIAMOND**
Shape and Cutting Style **ROUND BRILLIANT**
Measurements **10.83 - 10.86 X 6.59 MM**

GRADING RESULTS

Carat Weight **4.79 CARATS**

Color Grade **FANCY INTENSE GREEN**

Clarity Grade **VS 2**

Cut Grade **EXCELLENT**

ADDITIONAL GRADING INFORMATION

Polish **VERY GOOD**

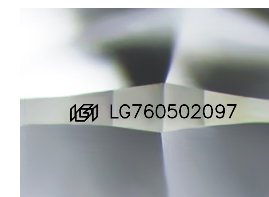
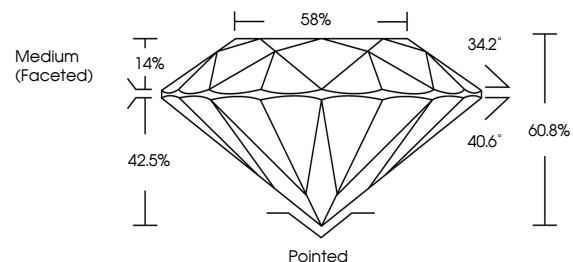
Symmetry **EXCELLENT**

Fluorescence **VERY SLIGHT**

Inscription(s) **LG760502097**

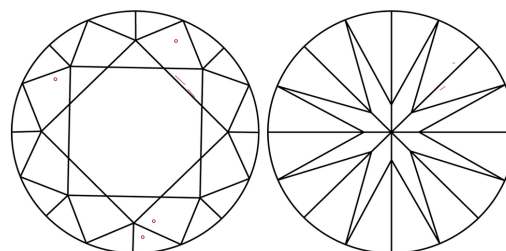
Comments: This Laboratory Grown Diamond was created by Chemical Vapor Deposition (CVD) growth process.
Indications of post-growth treatment.

PROPORTIONS



Sample Image Used

CLARITY CHARACTERISTICS



KEY TO SYMBOLS

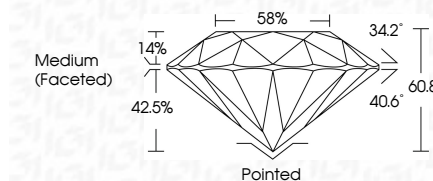
Red symbols indicate internal characteristics.
Green symbols indicate external characteristics.

COLOR

D E F G H I J Faint Very Light Light

CLARITY

FL	IF	VS ¹⁻²	VS ¹⁻²	SI ¹⁻²	I ¹⁻³
Flawless	Internally Flawless	Very Very Slightly Included	Very Slightly Included	Slightly Included	Included



ADDITIONAL GRADING INFORMATION

Polish **VERY GOOD**

Symmetry **EXCELLENT**

Fluorescence **VERY SLIGHT**

Inscription(s) **LG760502097**

Comments: This Laboratory Grown Diamond was created by Chemical Vapor Deposition (CVD) growth process.
Indications of post-growth treatment.



IGI



January 17, 2026
IGI Report No **LG760502097**
ROUND BRILLIANT

4.79 CARATS
Carat Weight
FANCY INTENSE GREEN
Color Grade

VS 2
Clarity Grade
EXCELLENT
Cut Grade

60.8%
Depth
58%
Table
Medium (Faceted)
Girdle

Pointed
Culet
VERY GOOD
Polish
EXCELLENT
Symmetry
VERY SLIGHT
Fluorescence
IGI LG760502097
Inscription(s)

Comments: This Laboratory Grown Diamond was created by Chemical Vapor Deposition (CVD) growth process.
Indications of post-growth treatment.