



**ELECTRONIC COPY**

## LABORATORY GROWN DIAMOND REPORT

January 1, 2026	
IGI Report Number	LG760502089
Description	LABORATORY GROWN DIAMOND
Shape and Cutting Style	ROUND BRILLIANT
Measurements	8.20 - 8.25 X 4.96 MM

## GRADING RESULTS

Carat Weight	2.05 CARATS
Color Grade	FANCY INTENSE PINK
Clarity Grade	VS 2
Cut Grade	EXCELLENT

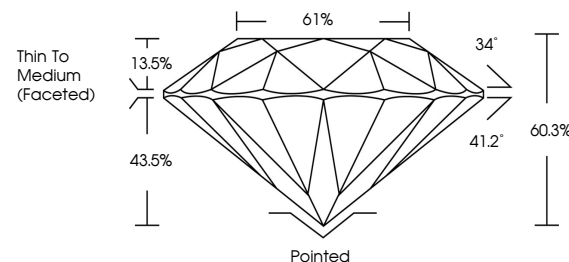
### ADDITIONAL GRADING INFORMATION

Polish	VERY GOOD
Symmetry	EXCELLENT
Fluorescence	SLIGHT
Inscription(s)	15 LG760502089

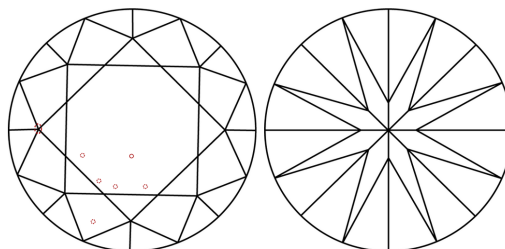
Comments: This Laboratory Grown Diamond was created by Chemical Vapor Deposition (CVD) growth process.  
Indications of post-growth treatment.

LG760502089  
Report verification at [lgi.org](https://lgi.org)

## PROPORTIONS

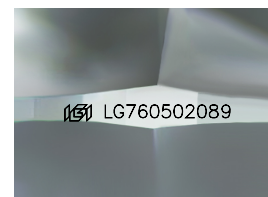


## CLARITY CHARACTERISTICS



## KEY TO SYMBOLS

Red symbols indicate internal characteristics.  
Green symbols indicate external characteristics.



Sample Image Used

## COLOR

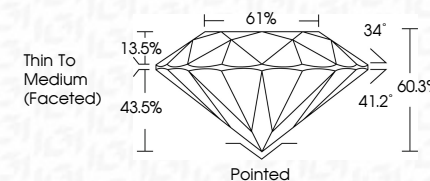
D E F G H I J Faint Very Light Light

## CLARITY

FL	IF	VVS <sup>1-2</sup>	VS <sup>1-2</sup>	SI <sup>1-2</sup>	I <sup>1-3</sup>
Flawless	Internally Flawless	Very Very Slightly Included	Very Slightly Included	Slightly Included	Included



January 1, 2026	
IGI Report Number	LG760502089
Description	LABORATORY GROWN DIAMOND
Shape and Cutting Style	ROUND BRILLIANT
Measurements	8.20 - 8.25 X 4.96 MM
GRADING RESULTS	
Carat Weight	2.05 CARATS
Color Grade	FANCY INTENSE PINK
Clarity Grade	VS 2
Cut Grade	EXCELLENT



### ADDITIONAL GRADING INFORMATION

Polish	VERY GOOD
Symmetry	EXCELLENT
Fluorescence	SLIGHT
Inscription(s)	 LG760502089
<p>Comments: This Laboratory Grown Diamond was created by Chemical Vapor Deposition (CVD) growth process.</p> <p>Indications of post-growth treatment.</p>	



© IGI 2020, International Gemological Institute

FD - 10 20

**www.igi.org**



THIS DOCUMENT WAS PRODUCED WITH THE FOLLOWING SECURITY MEASURES: SPECIAL DOCUMENT PAPER, INK SCREENS, WATERMARK, BACKGROUND DESIGNS, HOLOGRAM AND OTHER SECURITY FEATURES NOT LISTED AND DO EXCEED DOCUMENT SECURITY INDUSTRY GUIDELINE

January 1, 2026  
GI Report No LG760502089  
DO NOT PRINT

2.20 - 8.25 X 4.95 MM	2.05 CARATS	
Carat Weight	FANCY INTENSE PINK	
Color Grade		
Clarity Grade	VS 2	
Cut Grade	EXCELLENT	
Depth	60.3%	
Table	61%	
Skille	Thin To Medium (face-up)	
Culet	Pointed	
Polish	VERY GOOD	
Symmetry	EXCELLENT	
Fluorescence	SLIGHT	

**Comments:**  
This Laboratory Grown Diamond was  
created by Chemical Vapor Deposition  
(CVD) growth process.