

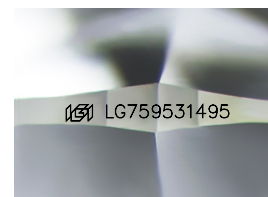
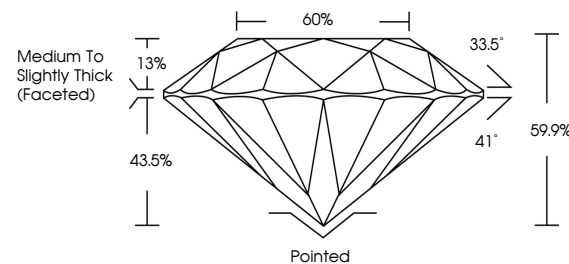


**ELECTRONIC COPY**

## LABORATORY GROWN DIAMOND REPORT

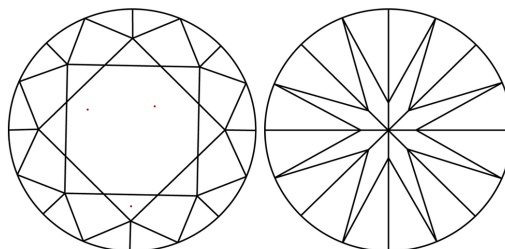
LG759531495  
Report verification at [igi.org](https://igi.org)

## PROPORTIONS



Sample Image Used

## CLARITY CHARACTERISTICS



## KEY TO SYMBOLS

Red symbols indicate internal characteristics.  
Green symbols indicate external characteristics.

## COLOR

D E F G H I J Faint Very Light Light

## CLARITY

FL	IF	VVS <sup>1-2</sup>	VS <sup>1-2</sup>	SI <sup>1-2</sup>	I <sup>1-3</sup>
Flawless	Internally Flawless	Very Very Slightly Included	Very Slightly Included	Slightly Included	Included

## LABORATORY GROWN DIAMOND REPORT



December 25, 2025

IGI Report Number **LG759531495**Description **LABORATORY GROWN DIAMOND**Shape and Cutting Style **ROUND BRILLIANT**

Measurements 8.83 - 8.86 X 5.29 MM

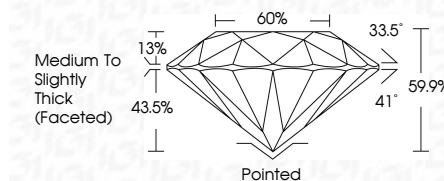
## GRADING RESULTS

Carat Weight **2.53 CARATS**

Color Grade D

Clarity Grade WS 2

Cut Grade **IDEAL**



### ADDITIONAL GRADING INFORMATION

Polish EXCELLENT

Symmetry **EXCELLENT**Fluorescence **NONE**Inscription(s)  LG759531495

Comments: This Laboratory Grown Diamond was created by Chemical Vapor Deposition (CVD) growth process.  
Type IIa



© IGI 2020, International Gemological Institute

FD - 10 20



THIS DOCUMENT WAS PRODUCED WITH THE FOLLOWING SECURITY MEASURES: SPECIAL DOCUMENT PAPER, INK SCREENS, WATERMARK, BACKGROUND DESIGNS, HOLOGRAM AND OTHER SECURITY FEATURES NOT LISTED AND DO EXCEED DOCUMENT SECURITY INDUSTRY GUIDELINES

**www.igi.org**

December 25, 2025  
IGI Report No LG759531495  
ROUND BRILLIANT

8.83 - 8.86 X 5.25 MM		2.53 CARATS	
Carat Weight	Color Grade	D	
Clarity Grade		VVS 2	
Cut Grade		IDEAL	
Depth		89.9%	60%
Table			Medium To Slightly Thick (faceted)
Grade			
Culet			Pointed
Polish			EXCELLENT
Symmetry			EXCELLENT
Fluorescence			NONE
Additional Information			See Certificate for details

**Comments:**  
This Laboratory Grown Diamond was  
created by Chemical Vapor Deposition  
(CVD) growth process.