

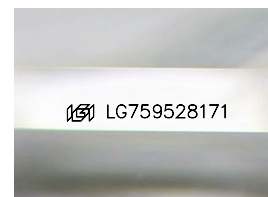
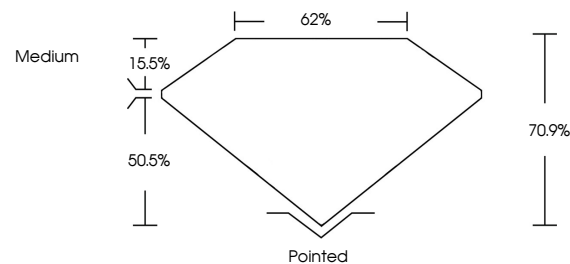


ELECTRONIC COPY

LABORATORY GROWN DIAMOND REPORT

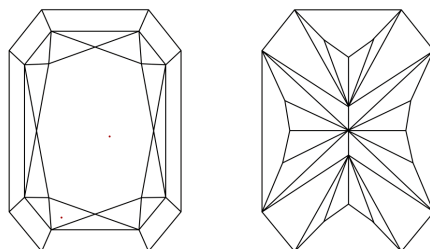
LG759528171
Report verification at lgi.org

PROPORTIONS



Sample Image Used

CLARITY CHARACTERISTICS



KEY TO SYMBOLS

Red symbols indicate internal characteristics.
Green symbols indicate external characteristics.

COLOR

D E F G H I J Faint Very Light Light

CLARITY

FL	IF	VVS ¹⁻²	VS ¹⁻²	SI ¹⁻²	I ¹⁻³
Flawless	Internally Flawless	Very Very Slightly Included	Very Slightly Included	Slightly Included	Included

LABORATORY GROWN DIAMOND REPORT



December 26, 2025

IGI Report Number **LG759528171**Description **LABORATORY GROWN DIAMOND**

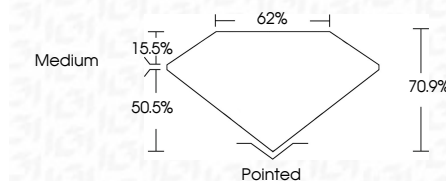
Shape and Cutting Style

Measurements 8.66 X 6.12 X 4.34 MM

GRADING RESULTS

Carat Weight 2.02 CARATS

Color Grade

Clarity Grade WS 2

ADDITIONAL GRADING INFORMATION

Polish **EXCELLENT**Symmetry **EXCELLENT**Fluorescence **NONE**Inscription(s) LG759528171

Comments: This Laboratory Grown Diamond was created by Chemical Vapor Deposition (CVD) growth process.
Type IIa



© IGI 2020, International Gemological Institute

FD - 10 20

www.igi.org

THIS DOCUMENT WAS PRODUCED WITH THE FOLLOWING SECURITY MEASURES: SPECIAL DOCUMENT PAPER, INK SCREENS, WATERMARK, BACKGROUND DESIGNS, HOLOGRAM AND OTHER SECURITY FEATURES NOT LISTED AND DO EXCEED DOCUMENT SECURITY INDUSTRY GUIDELINE

December 26, 2025	2.02 CARATS	F	VVS 2	70.9%	62%	Medium	PAINTED EXCELLENT EXCELLENT NONE	1691 LG795628171
GI Report No LG795628171	Color Grade	Clarity Grade	Depth	Table	Girdle	Culet	Polish	Comments: This Laboratory Grown Diamond was analyzed by Thermal Vapor Deposition (CVD) growth process. Type IIG
OUT REPORT RECT. MODIFIED BRILLIANT	2.02 CARATS	F	VVS 2	70.9%	62%	Medium	PAINTED EXCELLENT EXCELLENT NONE	