

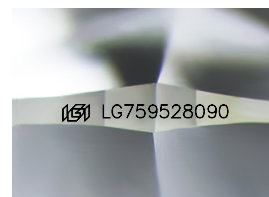
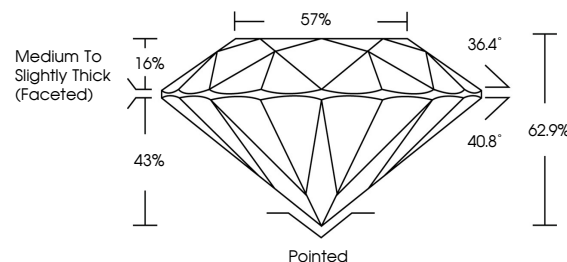


ELECTRONIC COPY

LABORATORY GROWN DIAMOND REPORT

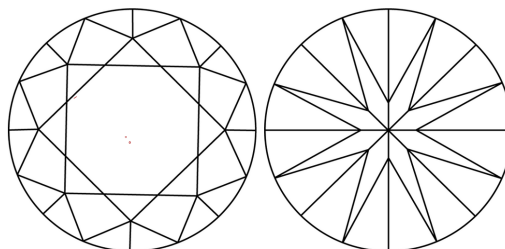
LG759528090
Report verification at lgi.org

PROPORTIONS



Sample Image Used

CLARITY CHARACTERISTICS



KEY TO SYMBOLS

Red symbols indicate internal characteristics.
Green symbols indicate external characteristics.

COLOR

D E F G H I J Faint Very Light Light

CLARITY

FL	IF	VVS ¹⁻²	VS ¹⁻²	SI ¹⁻²	I ¹⁻³
Flawless	Internally Flawless	Very Very Slightly Included	Very Slightly Included	Slightly Included	Included



December 27, 2025

IGI Report Number LG759528090

Description **LABORATORY GROWN DIAMOND**Shape and Cutting Style **ROUND BRILLIANT**

Measurements 8.04 - 8.09 X 5.07 MM

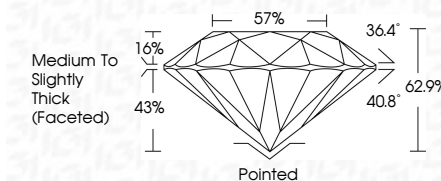
GRADING RESULTS

Carat Weight **2.04 CARATS**

Color Grade D

Clarity Grade VS 2

Cut Grade **EXCELLENT**



ADDITIONAL GRADING INFORMATION

Polish **EXCELLENT**Symmetry **EXCELLENT**Fluorescence **NONE**Inscription(s) LG759528090

Comments: This Laboratory Grown Diamond was created by Chemical Vapor Deposition (CVD) growth process.
Type IIa



© IGI 2020, International Gemological Institute

FD - 10 20



THIS DOCUMENT WAS PRODUCED WITH THE FOLLOWING SECURITY MEASURES: SPECIAL DOCUMENT PAPER, INK SCREENS, WATERMARK, BACKGROUND DESIGNS, HOLOGRAM AND OTHER SECURITY FEATURES NOT LISTED AND DO EXCEED DOCUMENT SECURITY INDUSTRY GUIDELINES

www.igi.org

December 27, 2025
LGI Report No LG759528090
ROUND BRILLIANT

2.04 CARATS	2.04 CARATS
D	D
Vs 2	Vs 2
EXCELLENT	EXCELLENT
62.5%	57%
Medium to Slightly Thick (Faceted)	Pointed
	EXCELLENT
	EXCELLENT
	NONE
	seen (12/25/2000)

Comments:
This Laboratory Grown Diamond was created by Chemical Vapor Deposition (CVD) growth process.